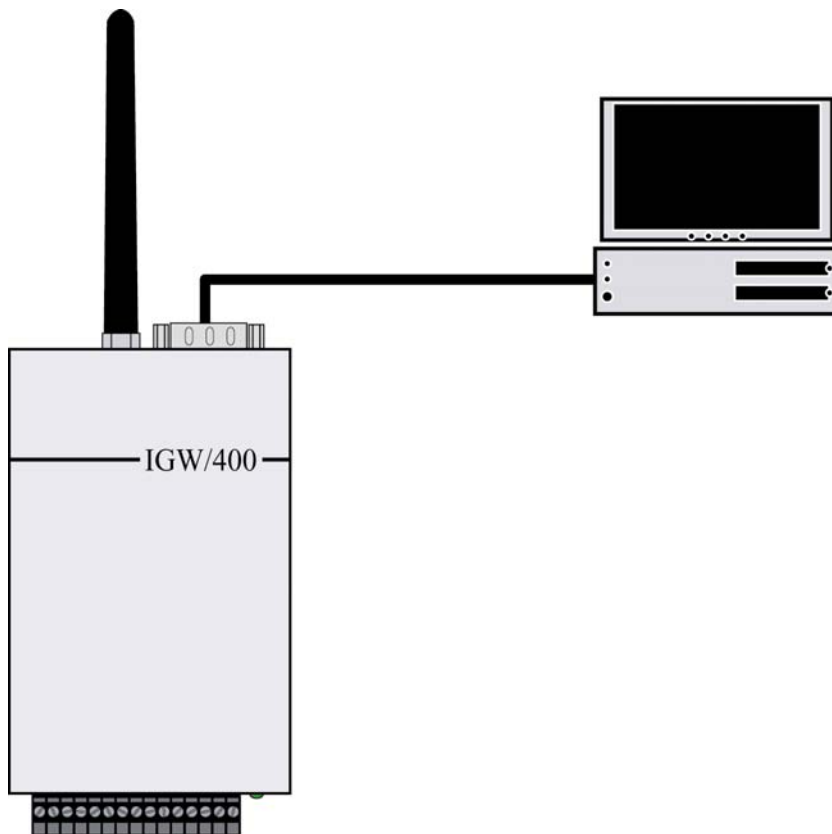


How to setup a configuration environment for the IGW/400

The IGW/400 configuration consist of two main steps: 1. The basic WLAN setup (IP address, SSID, ad-hoc mode or infrastructure mode, WLAN channel, WEP on or off) and 2. All other settings (i.e. speed and data format for the serial port UART2, TCP port number for the UART2 TCP server and other).

- **1. Step (Basic WLAN Setup):** Setup a serial link (**RS232 Serial Link**) between the IGW/400 UART1 serial port and a serial port of your PC system. Use a null-modem cable for the physical connection between the UART1 port of the IGW/400 and the PC COM port.



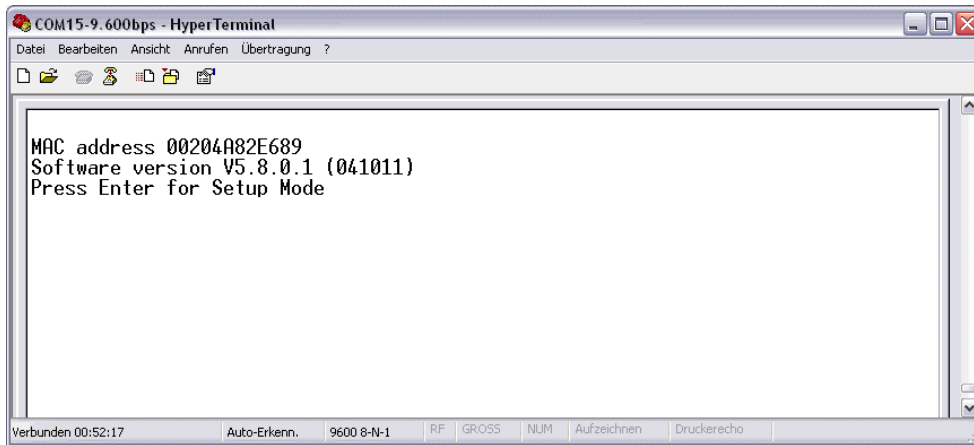
- **2. Step (Basic WLAN Setup):** Run your PC terminal emulation program. Microsoft Windows-based PC systems offer *HyperTerminal* for this task. Linux-based systems come with *Minicom*.

Set the terminal emulation program line parameters for your PC serial port to 9.600 bps, 8 data bits, 1 stop bit, no parity bit and no handshaking (**9.600/N/8/1**).

- **3. Step (Basic WLAN Setup):** Reset the IGW/400 by cycling the unit's power (turning the power off and back on). Immediately upon resetting the IGW/400, enter three lowercase 'x' characters.

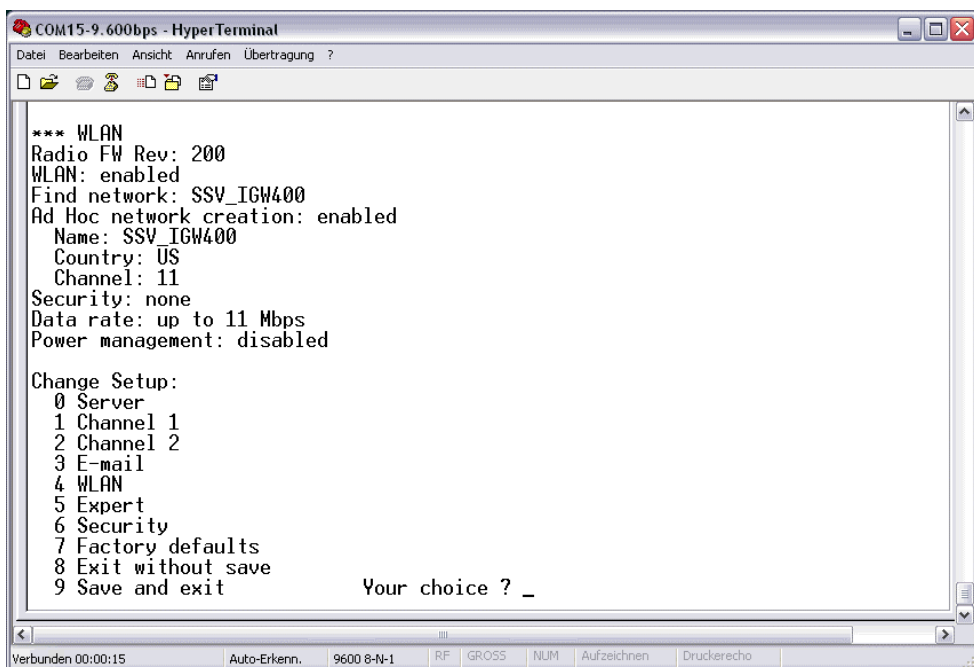
Please note: The easiest way to enter the setup mode is to hold down the 'x' key at the terminal (or terminal emulation) keyboard while resetting the IGW/400. This must be done within three seconds of resetting the IGW/400.

- **4. Step (Basic WLAN Setup):** If the IGW/400 detects the three lowercase ‘x’ characters, the response will be a short message shown in the following picture. Please press now *Enter* at the terminal (or terminal emulation) keyboard.



Please note: Entering the setup fails if *Enter* is not pressed within five seconds. The IGW/400 starts normal operation after the waiting period.

- **5. Step (Basic WLAN Setup):** Directly after the *Enter* key detection the IGW/400 shows the current setup values followed by a short menu with 10 items (accessible over ‘0’ to ‘9’) followed by a simple prompt.



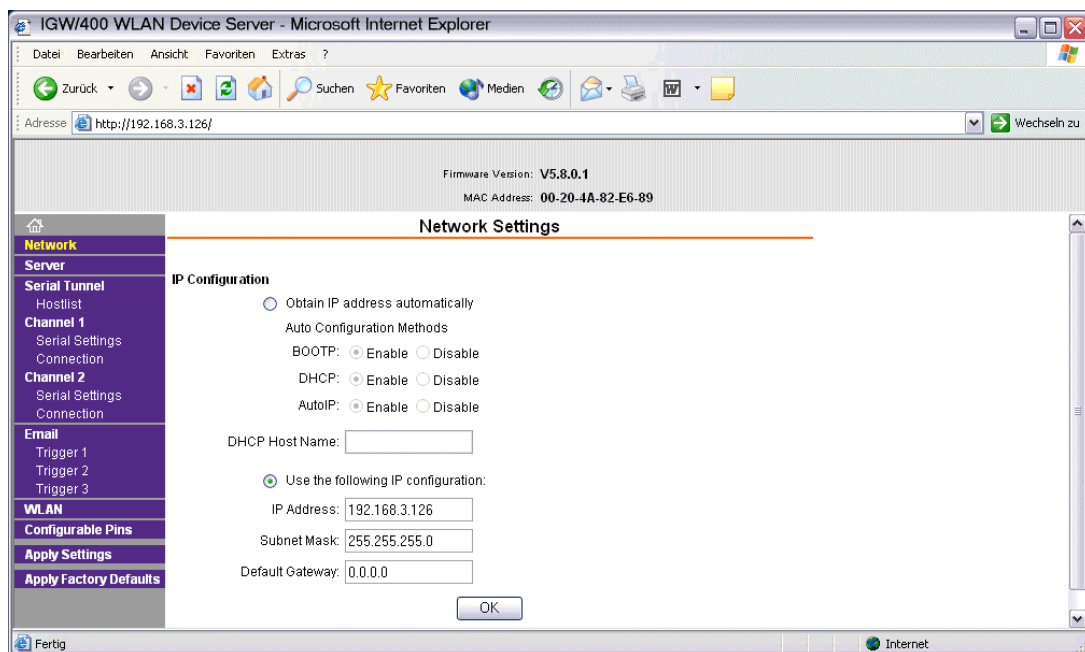
Important for the basic WLAN setup are the item points 0 (Server) and 4 (WLAN). Point 0 allows you to change the IP address, gateway IP address and network mask. Choosing item point 4 offers a sub-menu with setup features for SSID, ad-hoc mode or infrastructure mode, WLAN channel selection, WEP on or off and some other parameters.

The following step requires a WLAN-based TCP/IP link between your PC and the IGW/400. Please use the steps 1 to 5 for making the IGW/400 WLAN accessible.

- **6. Step (All Other Settings):** Run a Web browser (i.e. Microsoft Internet Explorer or other) on your PC. Enter the URL

http://192.168.3.126

After that, the browser contacts the embedded Web server. This server delivers a Web-based user interface with many setup features.



Please note: The default IP address of your IGW/400 is **192.168.3.126**. Set your PC to **192.168.3.1** or similar. Make sure, that your IP network address is 192.168.3.0 for your first steps with a IGW/400.

That is all.