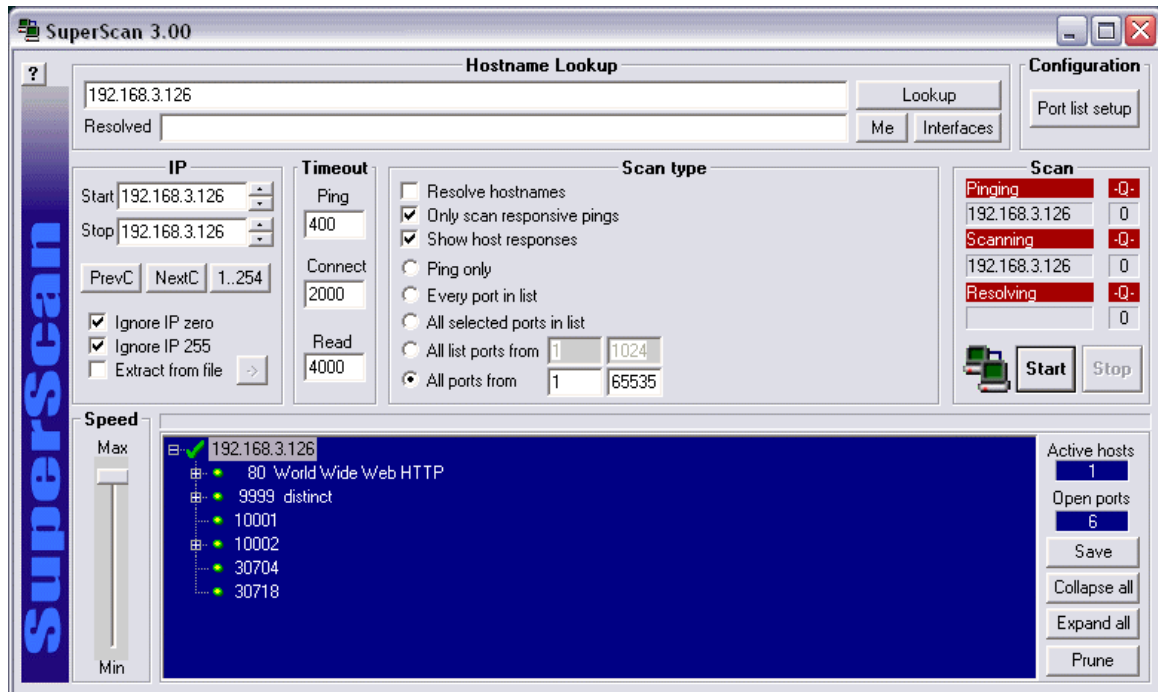


## How to find the open TCP Ports on the IGW/400

The default configuration of the IGW/400 WLAN Device Server comes with six open TCP ports. The setup allows you to change the TCP port numbers and the number of open TCP ports.

- **1. Step:** Run a port scanner program (*nmap*, *SuperScan* or similar) on your PC and find the open TCP ports of an IGW/400 WLAN Device Server.



TCP Port Number	Function
80	HTTP server for setup and configuration
9999	Telnet server for setup and configuration
10001	TCP server for access to UART1
10002	TCP server for access to UART2
30704	Reserved for test and configuration
30718	Reserved for test and configuration

That is all.