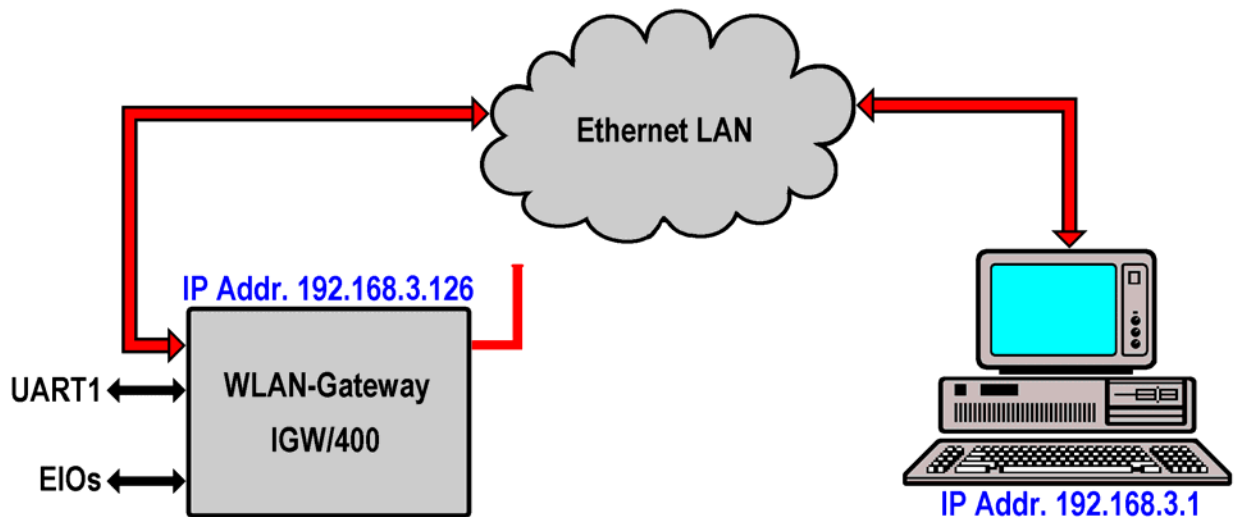


## How to understand and use the IGW/400 Ethernet LAN Interface

The IGW/400 WLAN Device Server offers also an alternative 10/100 Mbps Ethernet LAN interface. This wire-based network interface is useable instead of the IGW/400 WLAN interface. The IGW/400 configuration setup offers a point to disable the WLAN mode. This enables the Ethernet LAN interface.

The use of the IGW/400 10/100 Mbps Ethernet LAN interface protects your investment. You can start with wireless and later – if cables are available – migrate to wire-based. This brings more speed and security to your application. The subsystems and components connected to the IGW/400 don't need to be changed.

- **1. Step:** Setup an Ethernet-based LAN and integrate the IGW/400 to this network. The IGW/400 Ethernet LAN and WLAN interfaces share the same IP address.



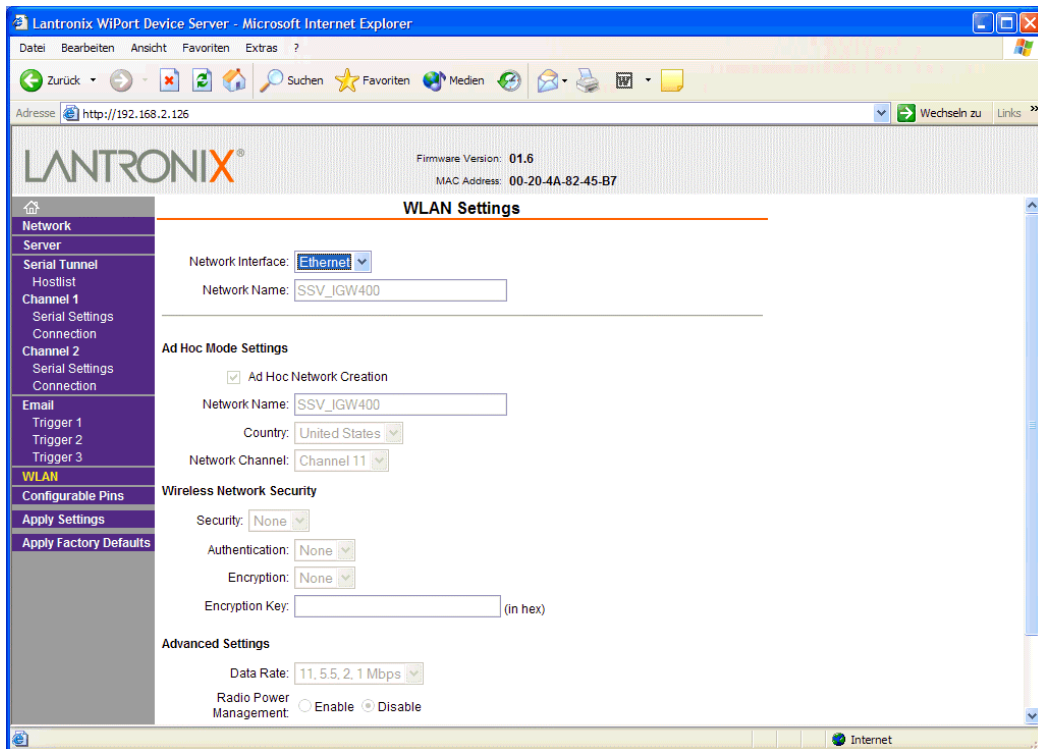
The picture above shows a LAN sample configuration with two systems. In this case it is possible, to connect these systems via Ethernet Cross-over LAN cable instead or a switch- or hub-based LAN.

**Please note:** The IGW/400 WLAN Device Server offers different modes for the IP address setup. Please see the IGW/400 User Documentation for details.

- **2. Step:** Use the IGW/400 WLAN settings and set the network interface to **Ethernet**. This selection will disable the IGW/400 WLAN interface.

Parameter	Setup Value
Network Interface	Ethernet
Network Name	---
Ad-hoc Mode Settings	Disable
Wireless Network Security	---
Advanced Settings	---

The following picture shows the IGW/400 Web-based setup screen for the **WLAN Settings**. This setup allows to disable the WLAN interface by enabling the Ethernet LAN interface.



That's all.