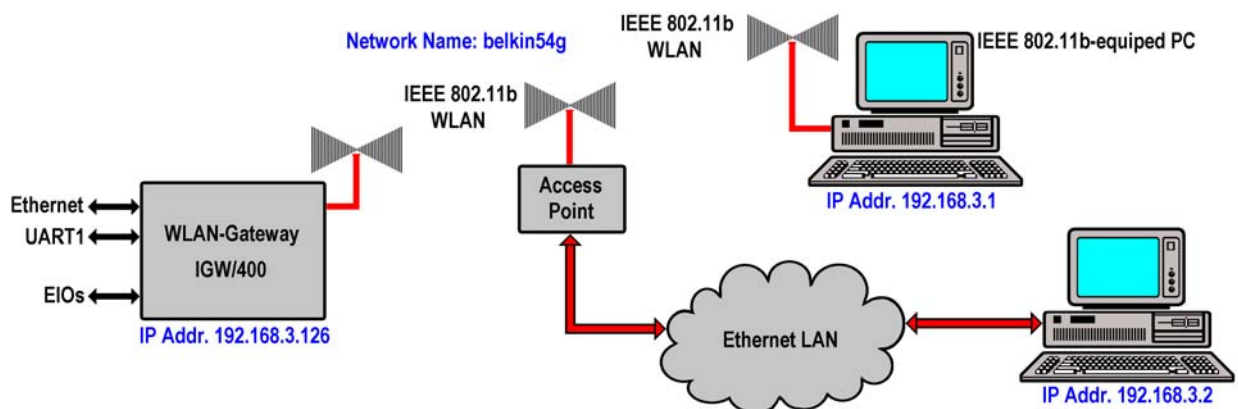


How to understand and use the IGW/400 WLAN Infrastructure Mode

The IGW/400 WLAN Device Server offers two different WLAN operation modes: the **Ad-hoc** (Peer-to-Peer) and the **Infrastructure Mode**. This document describes the basic details for using the IGW/400 in **Infrastructure-based** WLANs.

An IEEE 802.11 infrastructure-based networking framework the devices communicate with each other via an Access Point (AP). In Infrastructure mode, wireless devices can communicate with each other or with a wired network. When one AP is connected to a wired network and a set of wireless stations is referred to be used as a **Basic Service Set (BSS)**. An **Extended Service Set (ESS)** is a set of two or more BSSs that form a single subnetwork. Most corporate wireless LANs operate in infrastructure mode because they require access to the wired LAN in order to use services such as file servers or printers.

- **1. Step:** Setup an IEEE 802.11 Infrastructure-based WLAN with an Access Point (AP) and one or more client computers. This computers can be equipped with IEEE 802.11 WLAN interfaces or Ethernet LAN interfaces. Add the IGW/400 WLAN Device Server to this network.



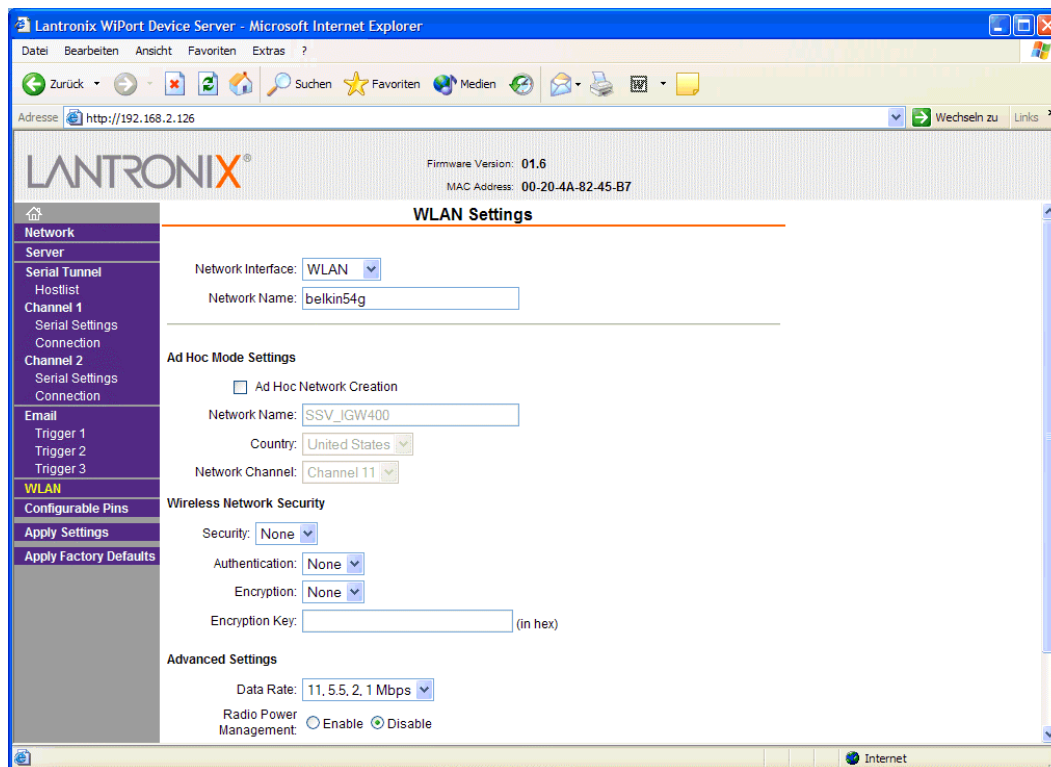
The picture shows a sample configuration with an IEEE 802.11 Infrastructure-based WLAN and one Access Point (AP). The network name in the sample is **belkin54g**. Each IEEE 802.11-based member of an Infrastructure-based WLAN has to know this name.

Please note: All members in an IEEE 802.11 Infrastructure-based WLAN use an IP address with the same Network ID (in this sample 192.168.3.x). This means, the WLAN- and Ethernet-connected devices stay within the same IP network. In this case the AP works as a bridge.

- **2. Step:** Use the IGW/400 WLAN settings and the following parameters to work in IEEE 802.11 Infrastructure Mode.

Parameter	Setup Value
Network Interface	WLAN
Network Name	belkin54g
Ad Hoc Mode Settings	Disable
Wireless Network Security	Depends on your needs
Advanced Settings	Depends on your needs

The network name in this sample setup is **belkin54g**. The Access Point (AP) setup defines the name. Find out the network name of your AP and use it your IGW/400 setup.



That's all.