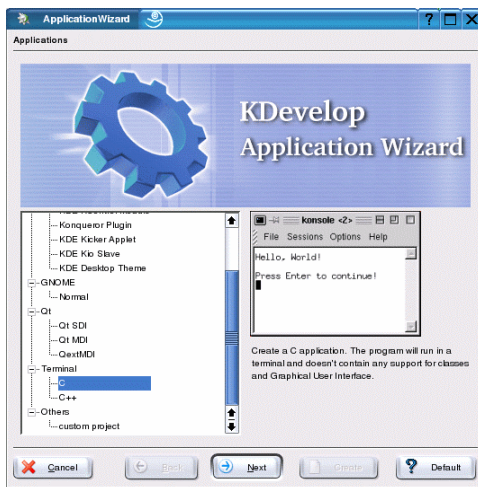


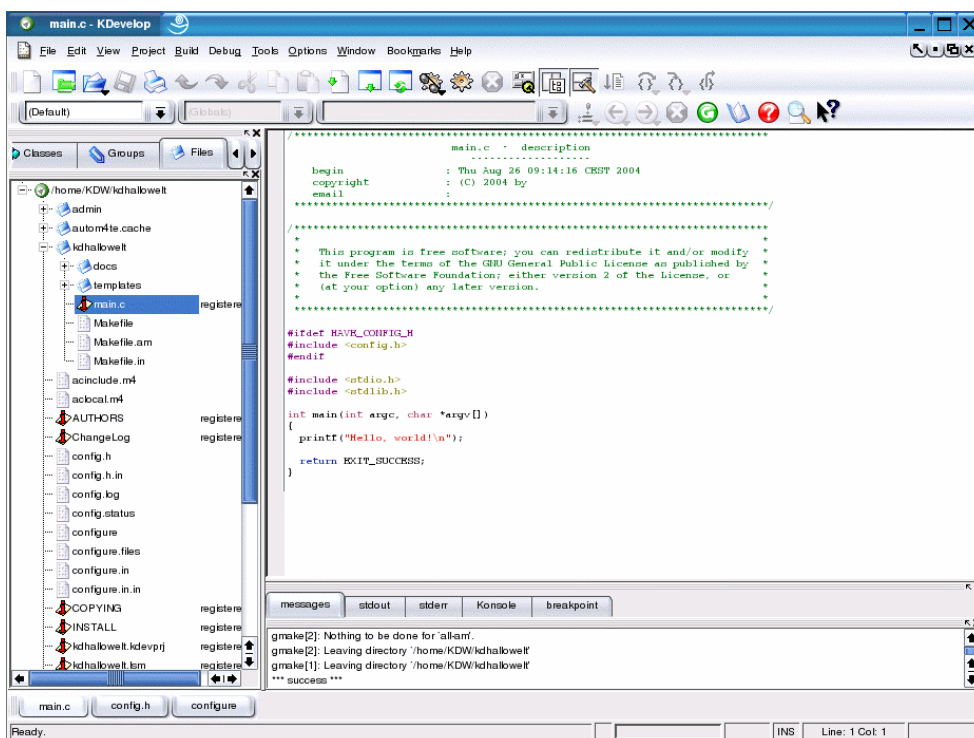
How to use the KDevelop IDE for C/C++ Programming

The IGW/100 Linux Security Gateway is powered by a 32-bit x86 microcontroller. The IA-32 microcontroller architecture and the IGW/100 default Linux operating system – called “Embedded Gateway Linux” – allows you to use the native GCC tool chain of a Linux-based PC for C/C++ software development (please see *mHTigw1-8.pdf: How to check your C Development Environment* for more details). It is also possible to use the *KDevelop* IDE for C/C++ programming.

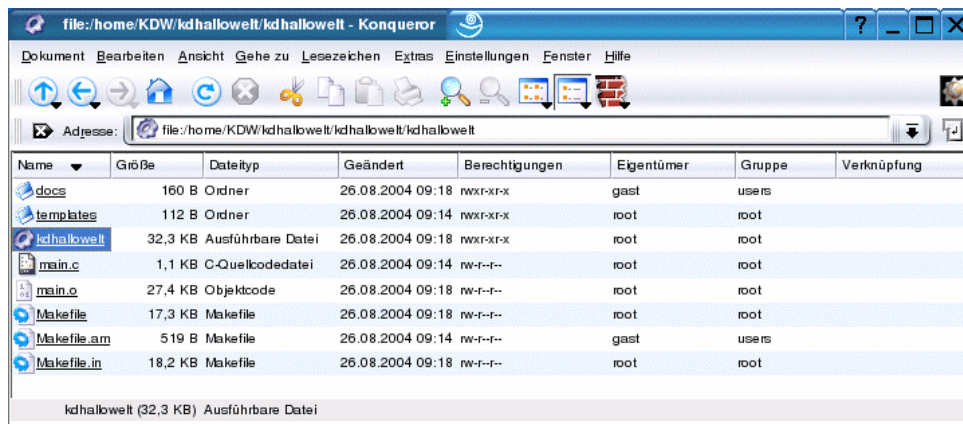
- **1. Step:** Create a new project with help of the *KDevelop Application Wizard*. Use the project type **Terminal C** or **Terminal C++**.



- **2. Step:** Edit your source code files with the *KDevelop* editor and run the build process over the menu items.

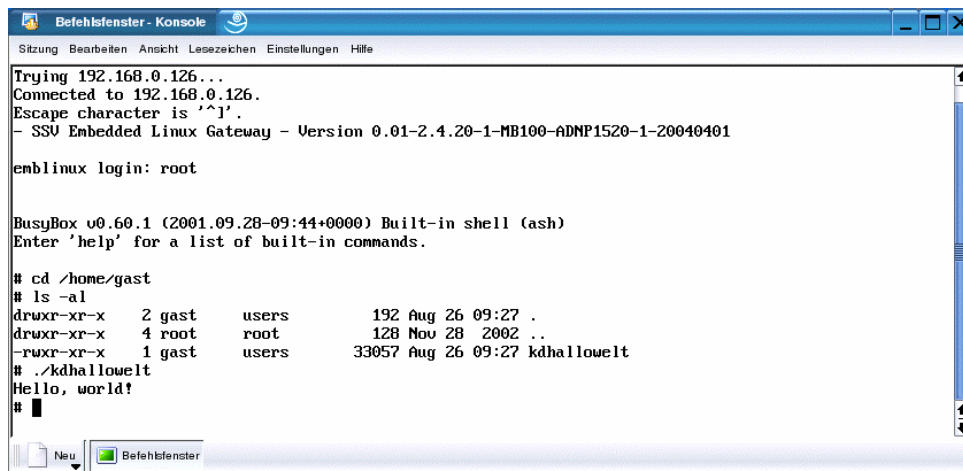


- **3. Step:** *KDevelop* places the executable in a directory **<home-dir>/p-name/p-name**. “home-dir” is the home directory name for your projects. “p-name” is the project name.



Locate the executable and transfer this file with help of a FTP session to the IGW/100 file system.

- **4. Step:** Run the executable on the IGW/100 Linux Security Gateway with the help of Telnet session.



That's all.