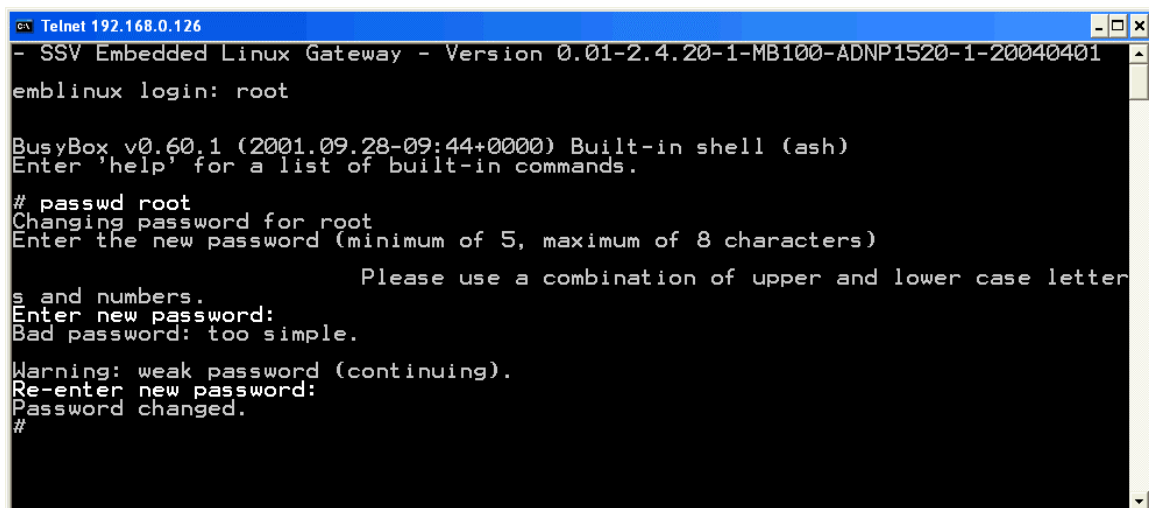


How to get FTP access with root rights

The default configuration of the Embedded Gateway Linux FTP server offers only write access to the RAM disk directories */home/gast* and */home/guest*. For all other directories within the RAM disk and the */mnt* or */flash* directory at external or internal flash memory, the FTP server configuration offers only read access rights.

- **1. Step:** Setup a Telnet session to your IGW/100 Linux Security Gateway. Make sure that you have super user (administrator) rights within this session. Then use the *passwd* command and set a new password for root.



```

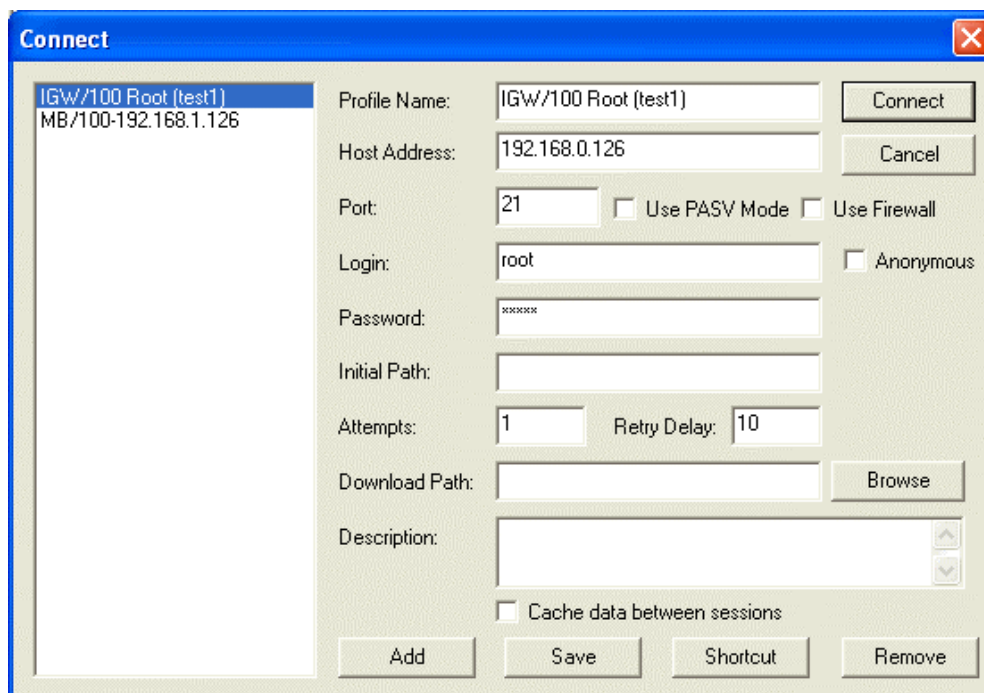
Telnet 192.168.0.126
- SSV Embedded Linux Gateway - Version 0.01-2.4.20-1-MB100-ADNP1520-1-20040401
emblinux login: root

BusyBox v0.60.1 (2001.09.28-09:44+0000) Built-in shell (ash)
Enter 'help' for a list of built-in commands.

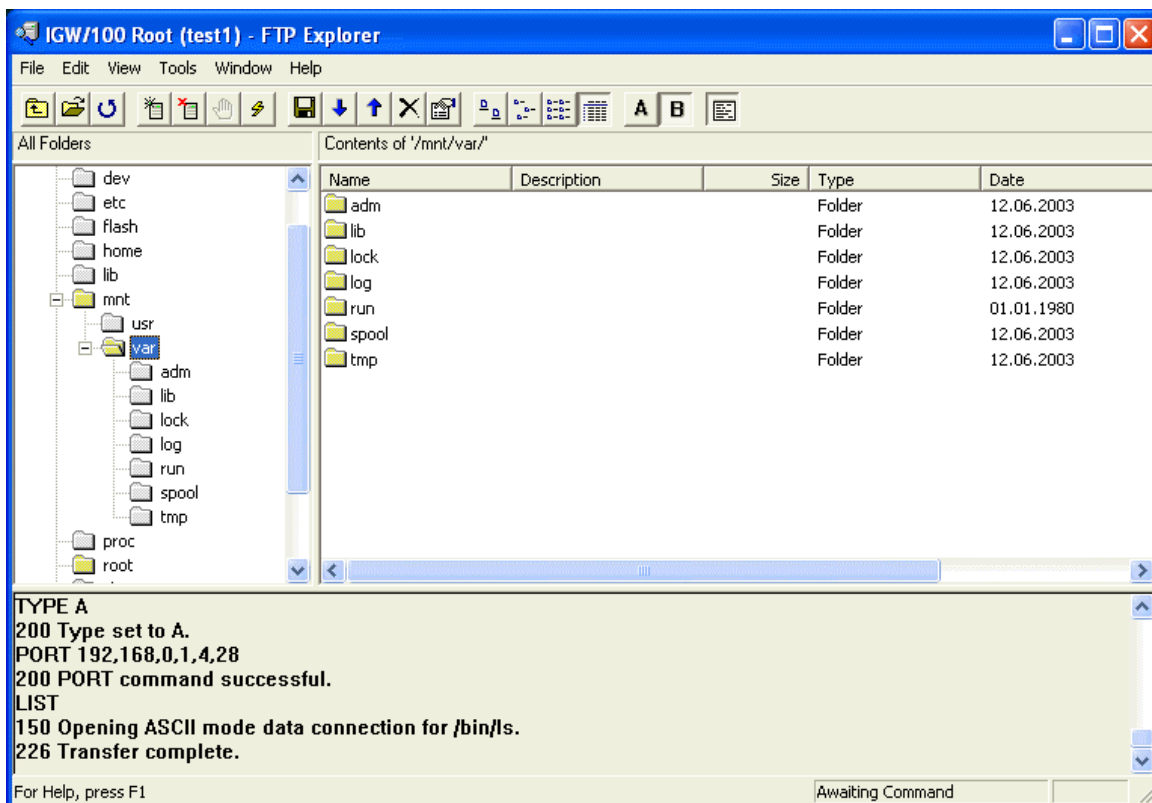
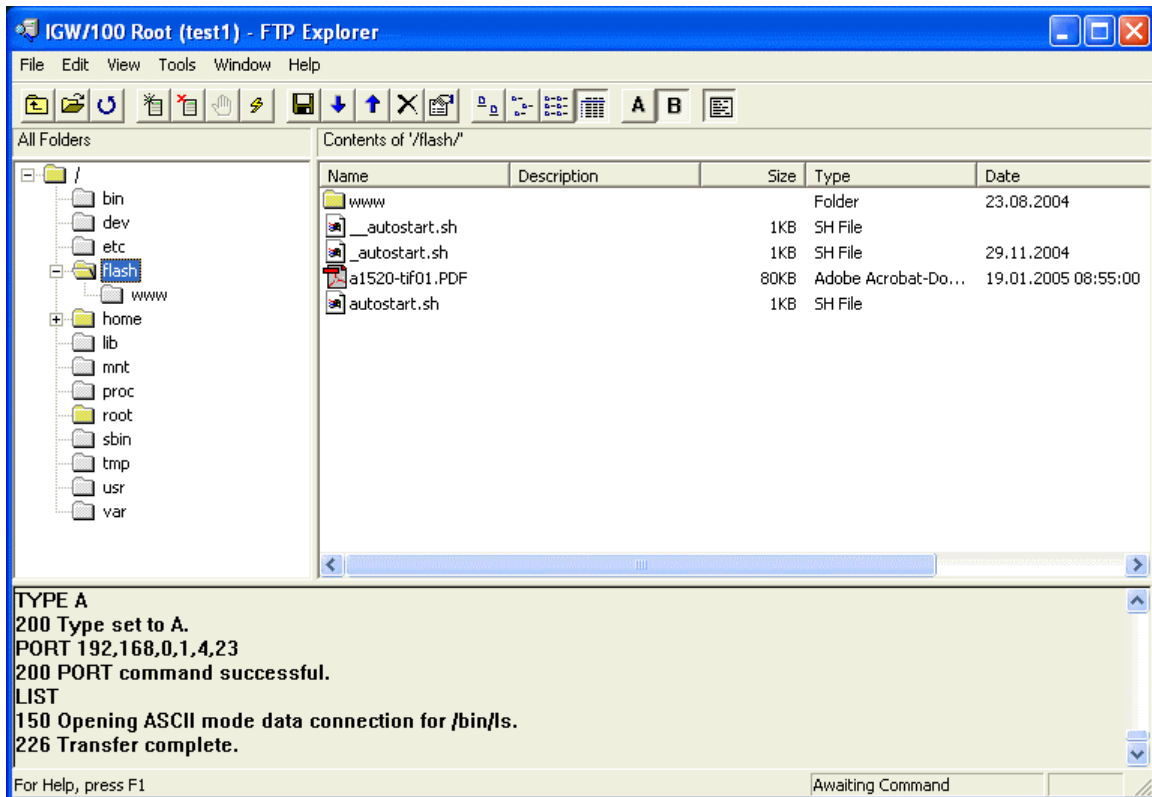
# passwd root
Changing password for root
Enter the new password (minimum of 5, maximum of 8 characters)
Please use a combination of upper and lower case letters
and numbers.
Enter new password:
Bad password: too simple.

Warning: weak password (continuing).
Re-enter new password:
Password changed.
#
```

- **2. Step:** Setup a new FTP session with the user name **root** and the new root password from the 1. step. Within this FTP session you have write access to all directories.

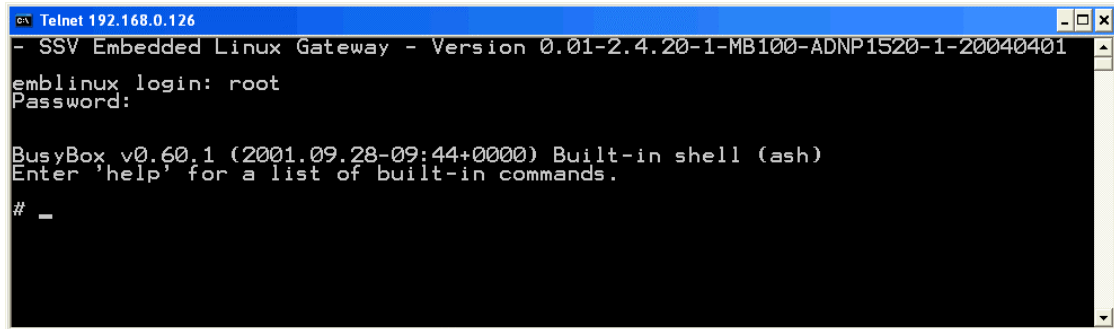


- **3. Step:** Change to the directory */flash* or */mnt* (if you have a CompactFlash card mounted to the IGW/100 file system) and write files with FTP to these directories.



- **4. Step:** Remove the FTP root access rights after you have finished your write operations. Just reboot the IGW/100 Linux Security Gateway to restore the old FTP configuration.

Please note: After the password change in the 1. step, each new Telnet login needs the new password.



```
ca Telnet 192.168.0.126
- SSV Embedded Linux Gateway - Version 0.01-2.4.20-1-MB100-ADNP1520-1-20040401
emblinux login: root
Password:

BusyBox v0.60.1 (2001.09.28-09:44+0000) Built-in shell (ash)
Enter 'help' for a list of built-in commands.

# _
```

That is all.