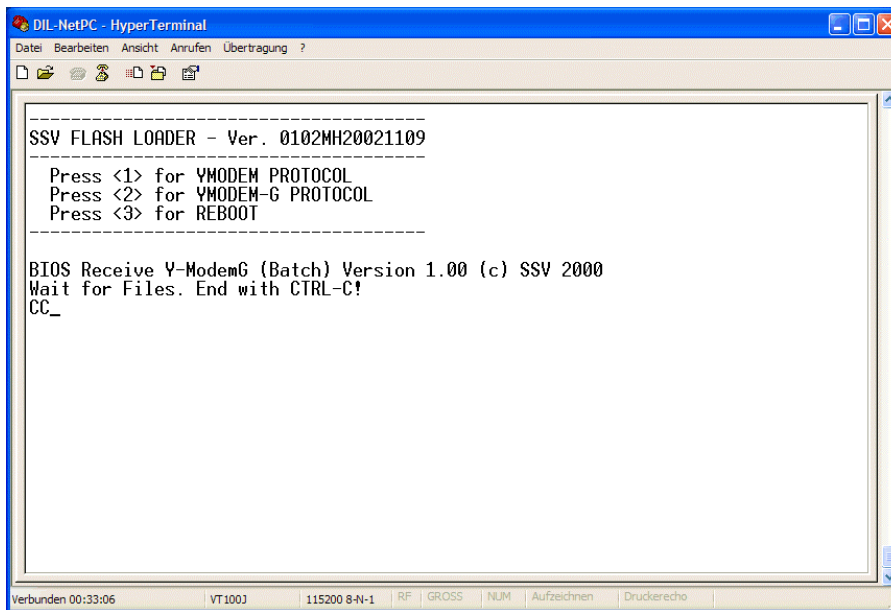


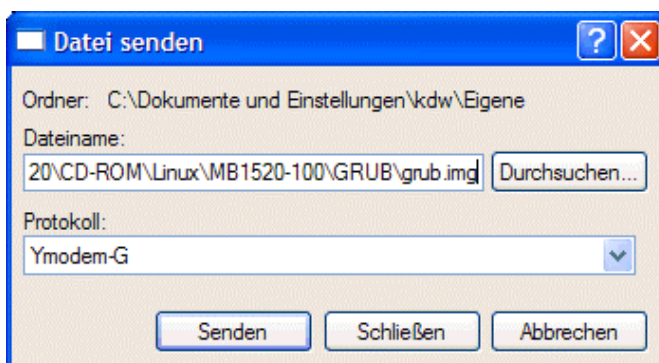
## How to download a O/S Image or the GRUB Boot Loader Image to the IGW/100

The DIL/NetPC ADNP/1520 of your IGW/100 Linux Security Gateway offers a build-in Flash Loader utility program to download a new O/S Image File or a new boot loader image (i.e. the GRUB boot loader for AMSEL) over a RS232 serial link between the IGW/100 and a PC system.

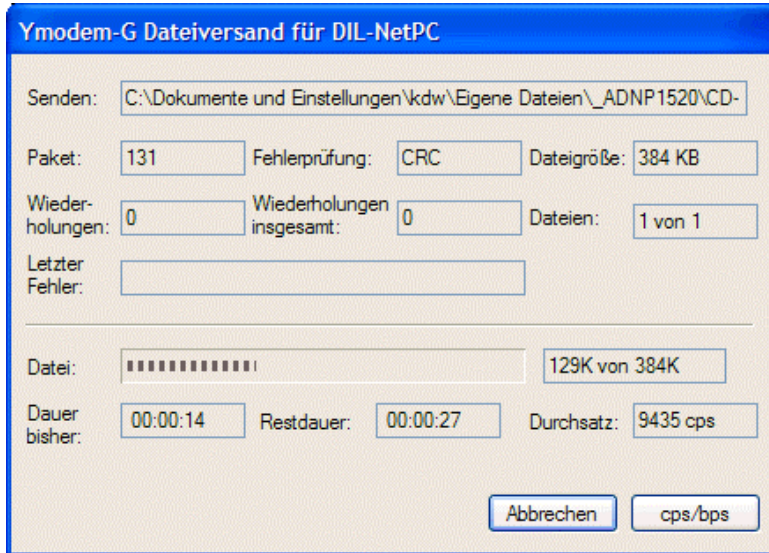
- **1. Step:** Setup a RS232 serial link between the IGW/100 and a PC system. Use a standard null-modem cable. Run a terminal (emulation) program on the PC (i.e. **HyperTerminal** for Windows-based PCs, **minicom** for Linux-based systems). Setup the line parameters to 115.200 bps, 8 data bits, 1 stop bit, no parity, no handshakes.
- **2. Step:** Press **CTRL-L** on your PC-based terminal emulation program and power-up the IGW/100. Please keep the keys for CTRL-L pressed until the end of the memory sizing phase of the IGW/100 BIOS. After that, the DIL/NetPC ADNP/1520 of your IGW/100 Linux Security Gateway runs the Flash Loader. If you see the Flash Loader menu, please select **option 1** (*Download with YMODEM protocol*).



- **3. Step:** Select the O/S Image File or a boot loader image and start the transfer to the IGW/100 Linux Security Gateway with the YMODEM or YMODEM-G protocol.



- **4. Step:** Wait until the YMODEM or YMODEM-G download finishes. Then press ESC for leave the Flash Loader wait state. After that please reboot the IGW/100 Linux Security Gateway with menu **option 3** (*Reboot*).



**Please note:** You can reload a new O/S Image File every time if this is necessary. The process is absolute uncritical. If you download a wrong image and if this image won't boot, please return to step 2 of this document.

That's all.