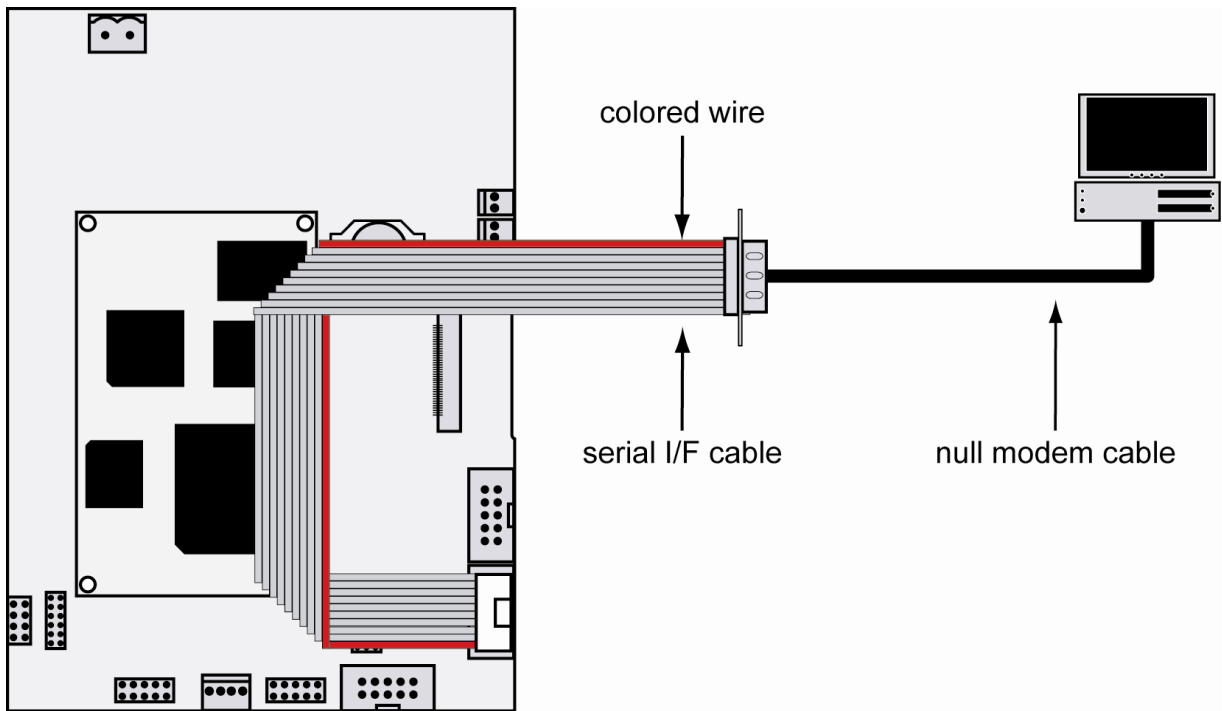


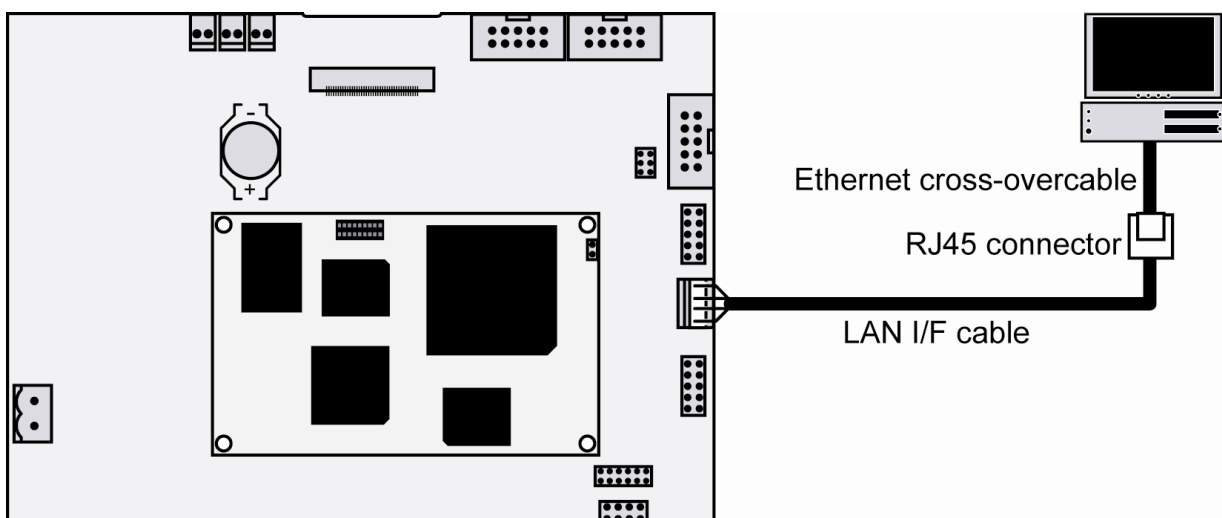
How to use the eSOM/2586 with ROM-DOS 6.22

Apart from Linux the embedded system-on-module eSOM/2586 runs also the Datalight ROM-DOS 6.22 O/S (please see also <http://www.datalight.com/>). The eSOM/2586 ROM-DOS configuration is identical to the DOS of the x86-based DIL/NetPC DNP/2486.

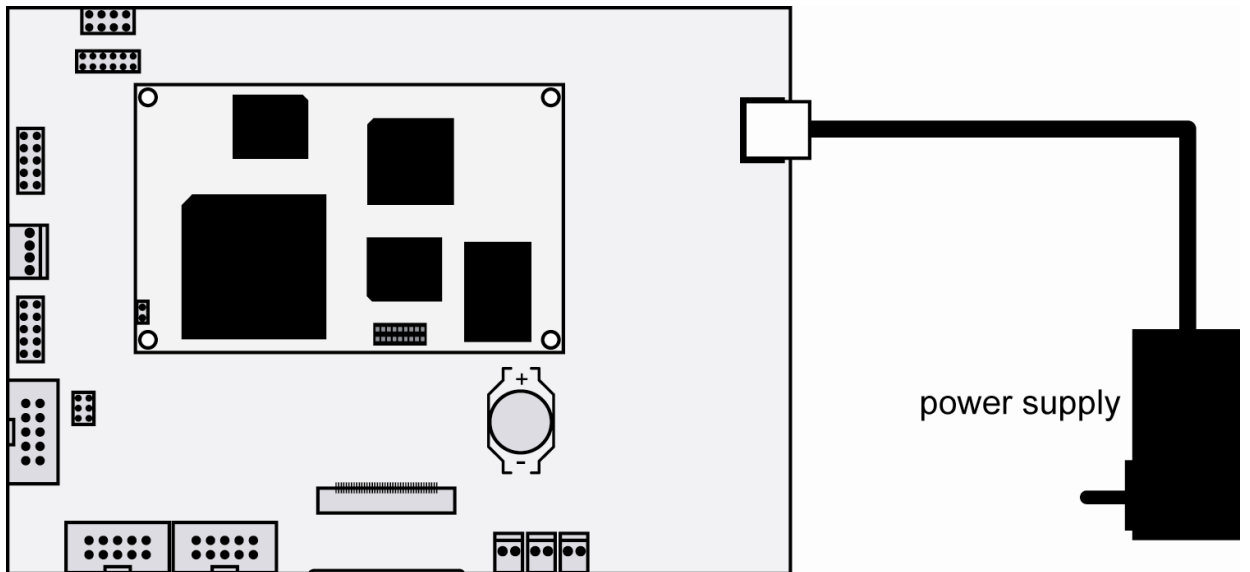
- 1. Step:** Setup a RS232-based serial link between the eSOM/2586 COM1 serial port and your development PC. Run a terminal emulation program (e.g. HyperTerminal or minicom) and configure this tool to 115.200 bps, 8 data bits, 1 stop bit, no parity bit and no handshake.



- 2. Step:** Setup an Ethernet-LAN link between the eSOM/2586 and your PC. The eSOM/2586 DOS configuration comes with the default IP address **192 . 168 . 0 . 125**. Please make sure that your PC can work with the IP address range **192 . 168 . 0 . x**.

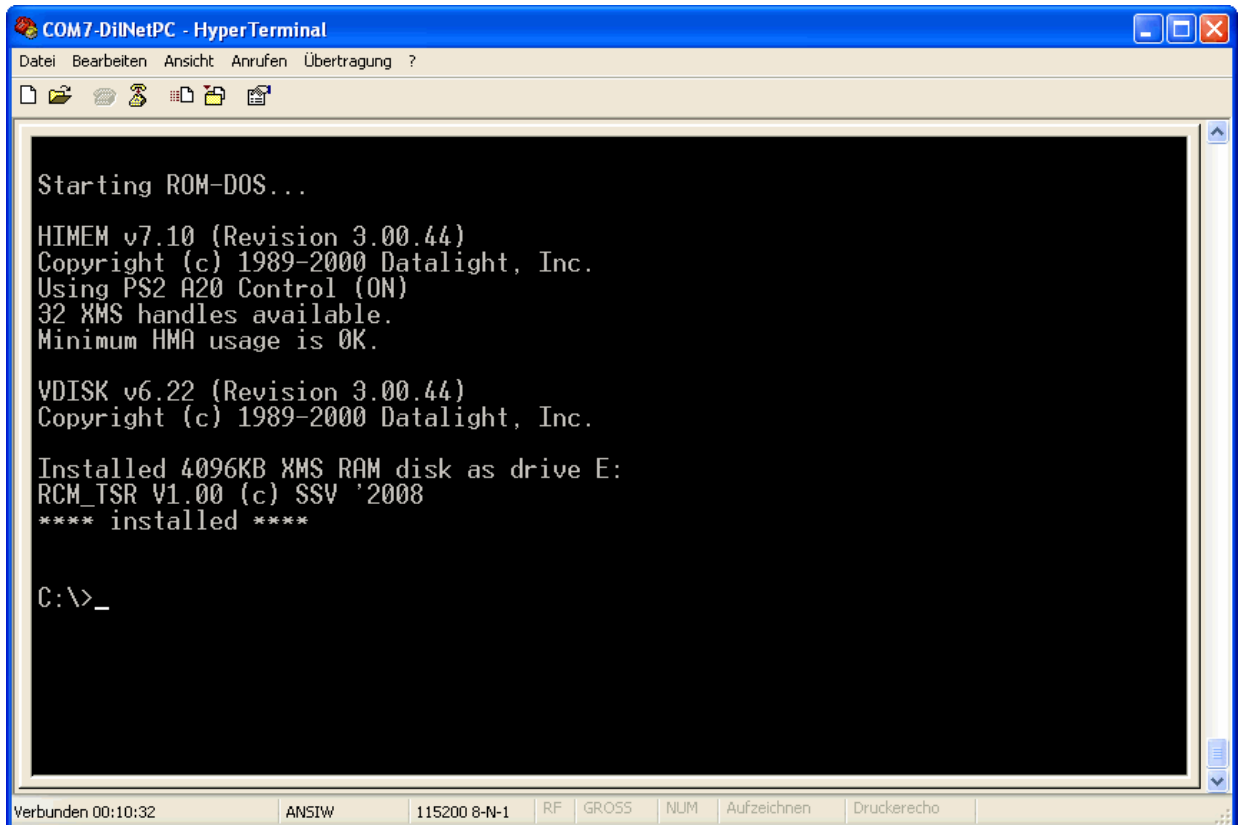


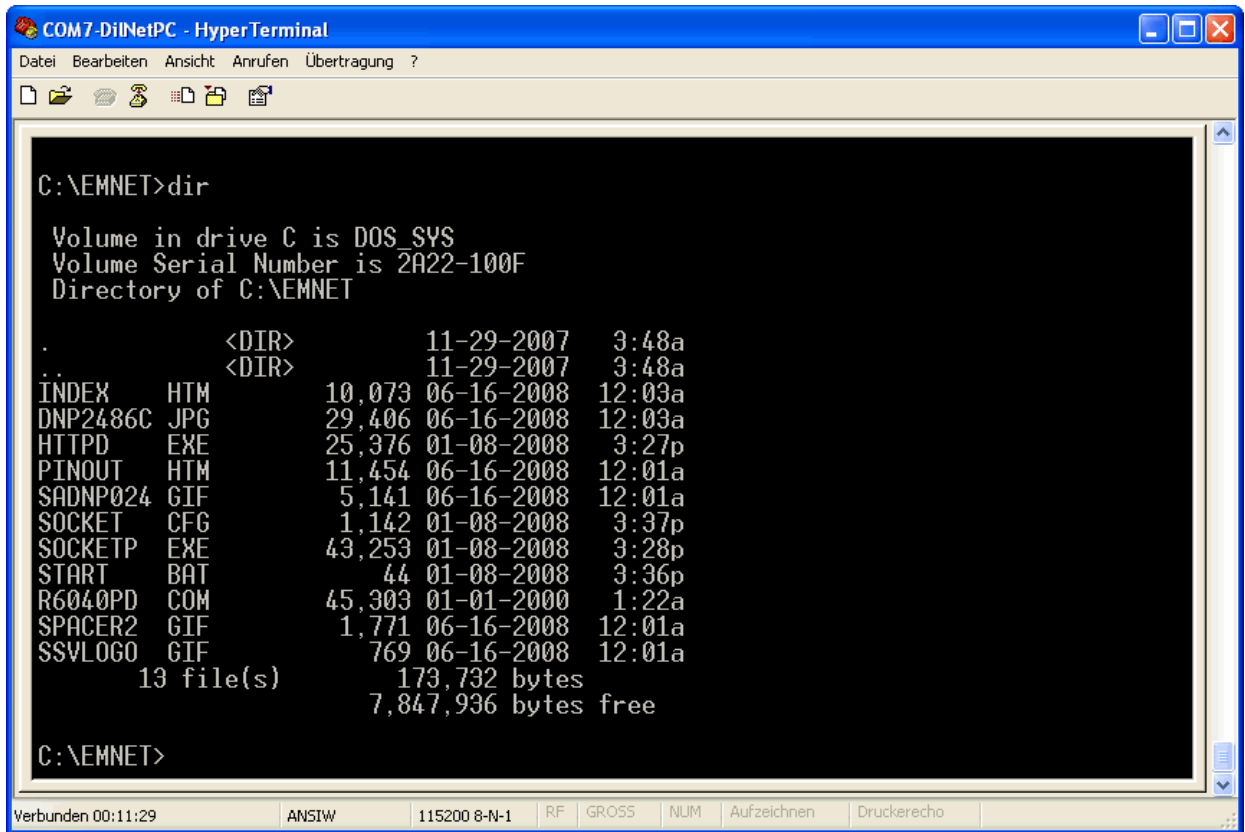
- **3. Step:** Connect a DC power supply to your eSOM/2586 board and power-up the embedded system-on-module eSOM/2586. Make sure that the RCM jumper is set on the eSOM/2586.



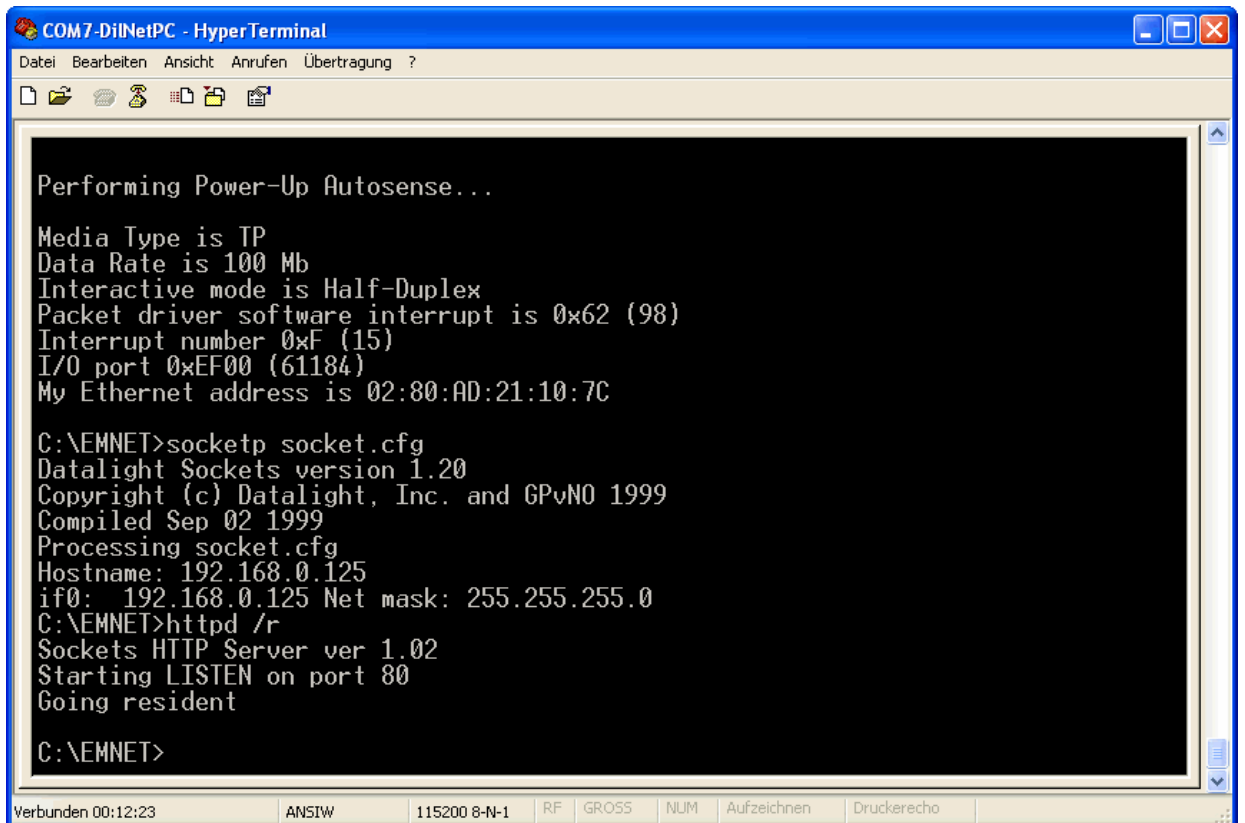
- **4. Step:** Direct after booting the eSOM/2586 offers a ROM-DOS command line form DOS drive C:. Please enter some DOS commands over your terminal emulation program. Here are some examples for DOS command lines:

```
dir
type autoexec.bat
```





- **5. Step:** Change to directory `C:\emnet` and run the file `start.bat`. This starts the ROM-DOS TCP/IP stack and the embedded web server.



- **6. Step:** Please run a web browser on your PC and access the eSOM/2586 ROM-DOS home page with the URL:

http://192.168.0.125



Please note: The eSOM/2586 ROM-DOS configuration is identical to the DOS of the x86-based DIL/NetPC DNP/2486. The ROM-DOS home page was build for the DNP/2486.

Please note: The ROM-DOS configuration of the eSOM/2586 contains three solid state disk drives:

| DOS drive name | Type | Available space |
|----------------|-------------------------|---------------------|
| C: | Flash disk (NAND flash) | 7.884.800 Bytes |
| D: | Flash disk (NAND flash) | 1.003.307.008 Bytes |
| E: | RAM disk | 4.184.064 Bytes |

That's all.