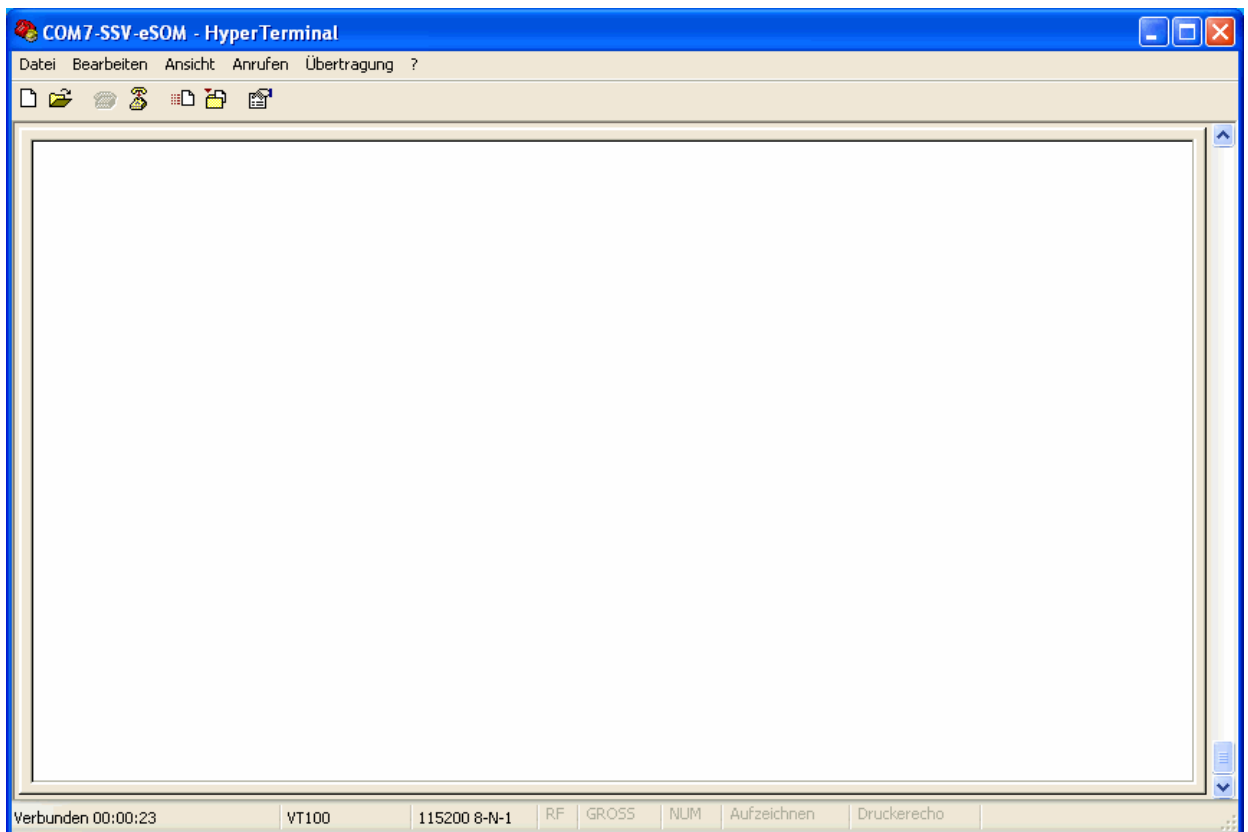


How to understand the eSOM/2586 Boot Process with RCM disabled

Direct after power-up the embedded system-on-module eSOM/2586 starts an automatic boot process from the on-board NAND flash memory chip. This process consists of the following steps.

- **1. Step:** Directly after power-up, the eSOM/2586 runs the AMI BIOS. This Basic Input Output System (BIOS) initializes the hardware components and runs the boot loader. **With RCM disabled** (please see the *System-on-Module eSOM/2586 Hardware Reference Manual* for details), there is **no BIOS message output** over the eSOM/2586 serial ports.
- **2. Step:** If the BIOS finish, the eSOM/2586 runs the SYSLINUX boot loader. With RCM disabled, there is **no SYSLINUX message output** over the eSOM/2586 serial ports.
- **3. Step:** Linux takes control over the eSOM/2586 hardware and runs all necessary processes for coming up to live. With RCM disabled, there is **no Linux message output** over the eSOM/2586 serial ports. The eSOM/2586 COM1 serial port is free for your application.



Please note: In this mode the eSOM/2586 displays some Linux boot messages over the VGA LCD interface.

That is all.