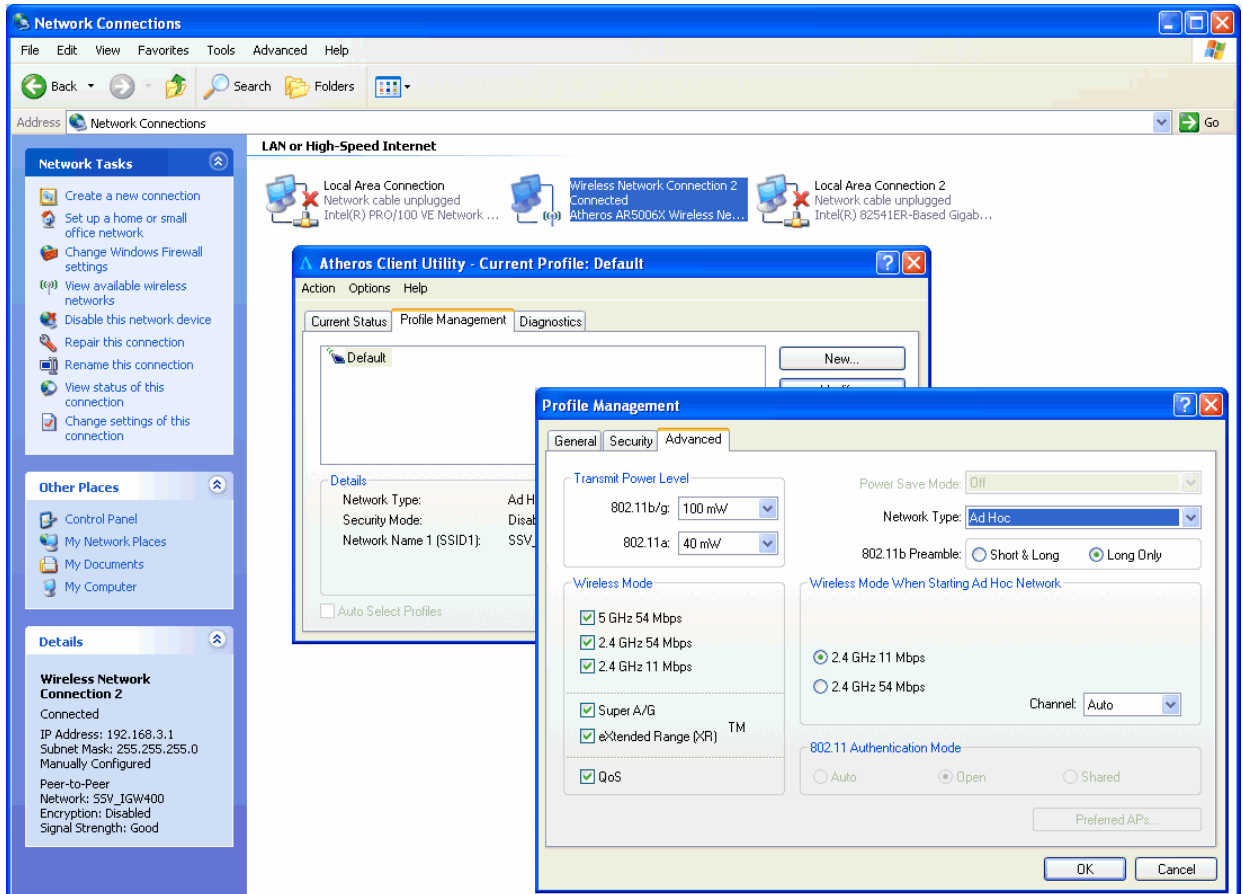


How to use the Com/PC IEEE 802.11a/b/g Wi-Fi (WLAN) wireless interface

The Com/PC1 default configuration offers one IEEE 802.11-based wireless network interface: **WLAN1** = IEEE 802.11a/b/g support with Atheros chips set.

- **1. Step:** If there is no DHCP server for the WLAN interface available, please assign the IP address manually. Table 1 shows a sample setup.



Network Interface	IP address for manual setup
LAN1	192.168.0.1
LAN2	192.168.1.1
WLAN1	192.168.3.1

Table 1: Sample IP address setup for the Com/PC network interfaces

Please note: In addition to the WLAN interface IP address setup, please use the *Atheros Client Utility* for setup a valid wireless profile.

That is all.