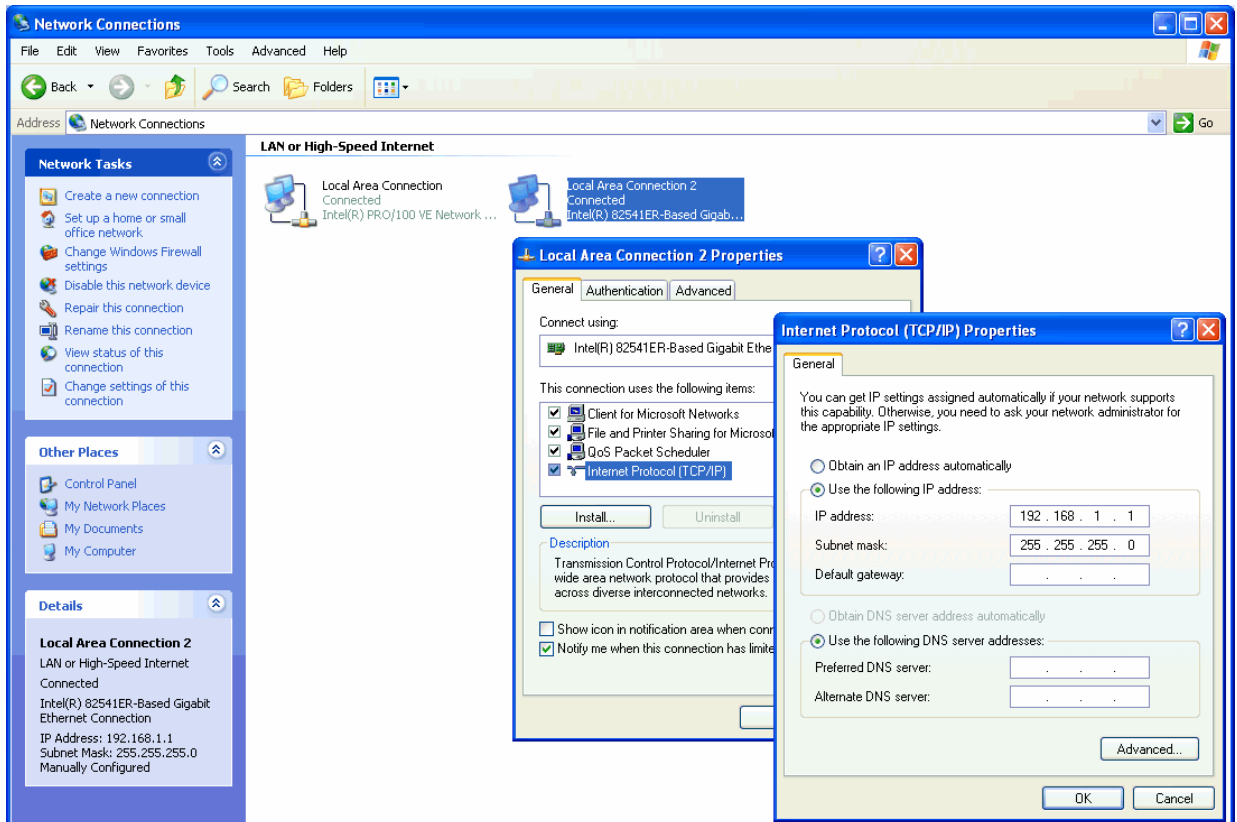


How to use the Com/PC Ethernet LAN network interfaces

The Com/PC1 default configuration offers two Ethernet LAN network interfaces: 1. LAN1 = 10/100 Mbps Ethernet, 2. LAN2 = 10/100/1000 Mbps Ethernet. Both interface are DHCP enabled (obtain an IP address automatically).

- **1. Step:** If there is no DHCP server for one or more interfaces available, please assign the IP addresses manually. Table 1 shows a sample setup.



Network Interface	IP address for manual setup
LAN1	192.168.0.1
LAN2	192.168.1.1
WLAN1	192.168.3.1

Table 1: Sample IP address setup for the Com/PC network interface

That is all.