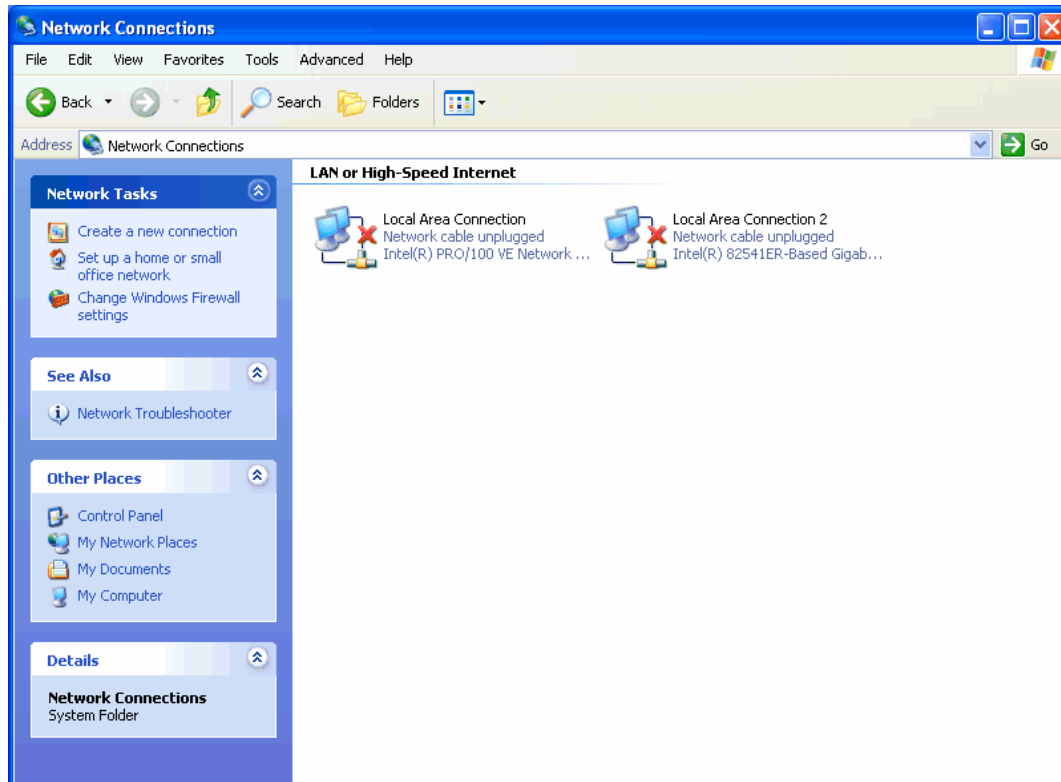


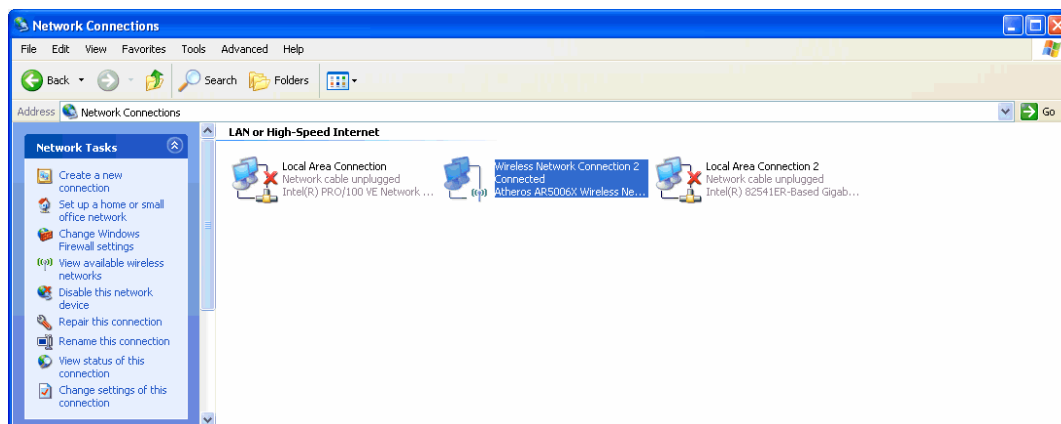
How to understand the Com/PC network interfaces

The Com/PC1 default configuration offers three IP-based network interfaces: 1. **LAN1** = 10/100 Mbps Ethernet, 2. **LAN2** = 10/100/1000 Mbps Ethernet and 3. **WLAN1** = IEEE 802.11a/b/g Wi-Fi interface with Atheros chips set.

- **1. Step:** Open the Windows XP network connection system folder directly after your first booting process. The system folder shows only the two Ethernet LAN network interfaces.



- **2. Step:** Open the Windows XP network connection system folder after the installation of the WLAN driver. The system folder shows the two Ethernet interfaces and one WLAN interface.



That is all.