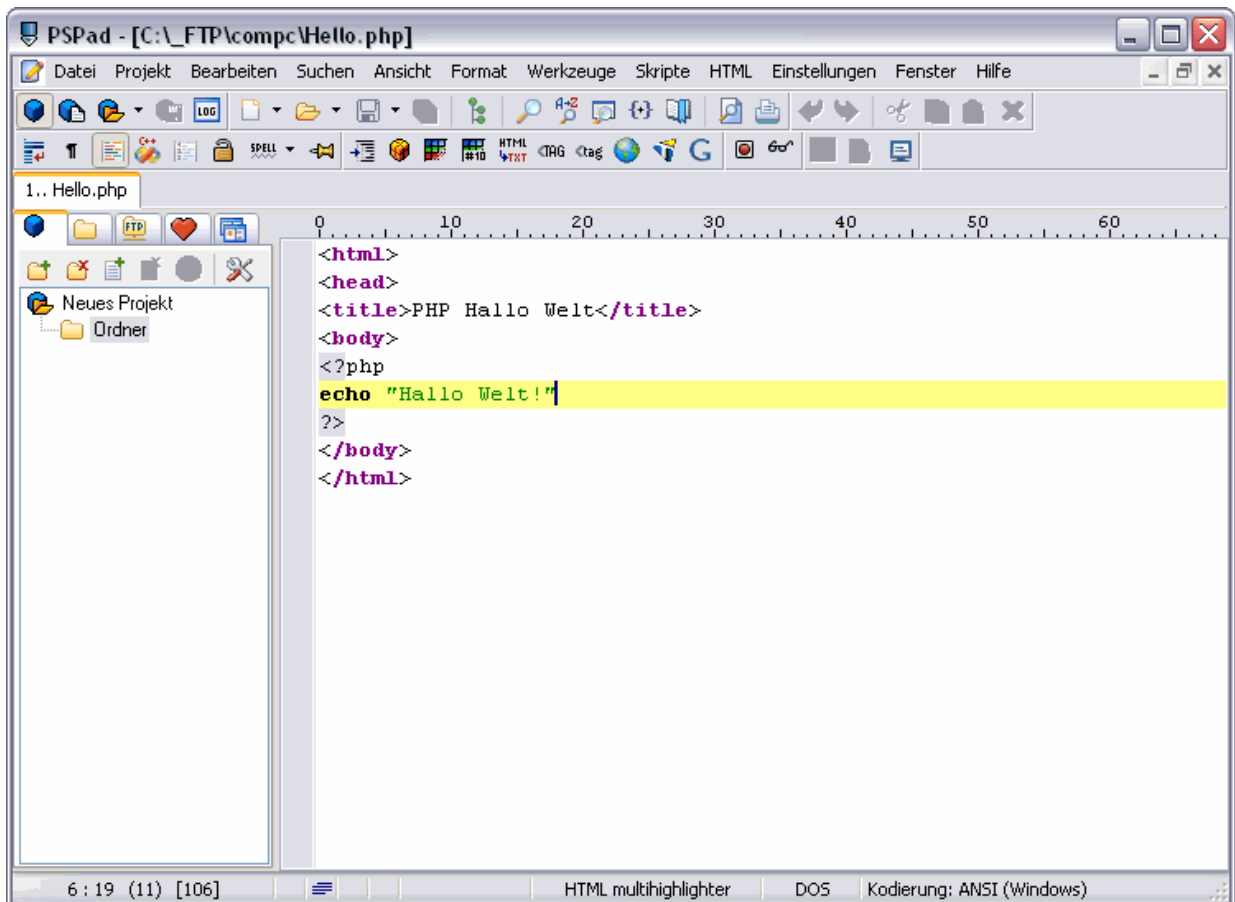


## How to use PHP with the Apache Web server

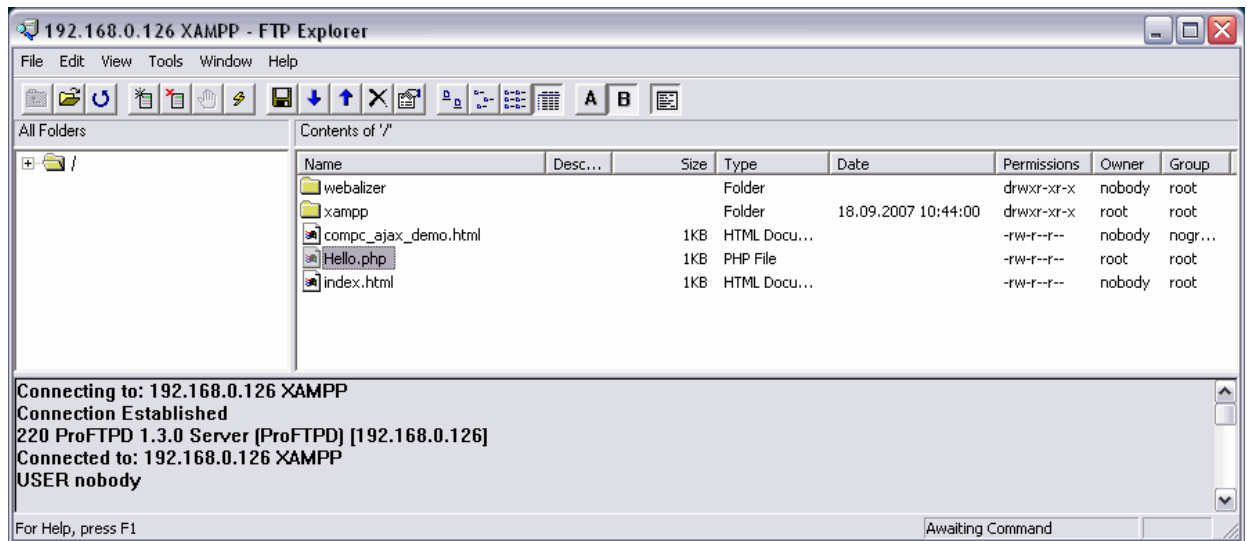
The Com/PC Embedded Gateway Linux (EGL/2) operating system comes with a pre-installed Apache Web server. Please see also *mHT-CPC1L-07.pdf: How to use the Apache Web server* for more information. This server supports also PHP (please browse the Internet for more information about the *PHP Hypertext Preprocessor*).

- **1. Step:** Create a PHP file with the name *Hello.php* on your development system. Use a simple text editor program for this job. The following code is a sample:

```
<html>
<head>
<title>PHP Hallo Welt</title>
<body>
<?php
echo "Hallo Welt!"
?>
</body>
</html>
```



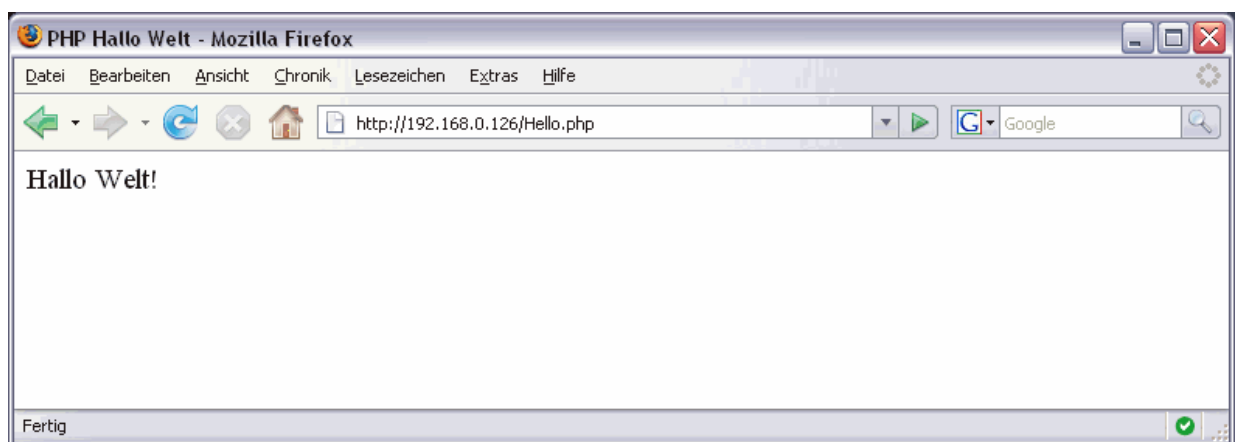
- **2. Step:** Now run a FTP session and upload *Hello.php* to */rwnv/opt/lampp/htdocs* on the EGL/2 Compact Flash card.



**Please note:** The standard configuration for the FTP server of the EGL/2 XAMPP services allows only the access to `/rwnv/opt/lampp/htdocs`.

- **5. Step:** Access `Hello.php` with your Web browser. The URL for this access on the Com/PC is:

`http://192.168.0.126/Hello.php`



This URL assumes that your Com/PC is using the IP address `192.168.0.126`. Change this address if necessary.

That is all.