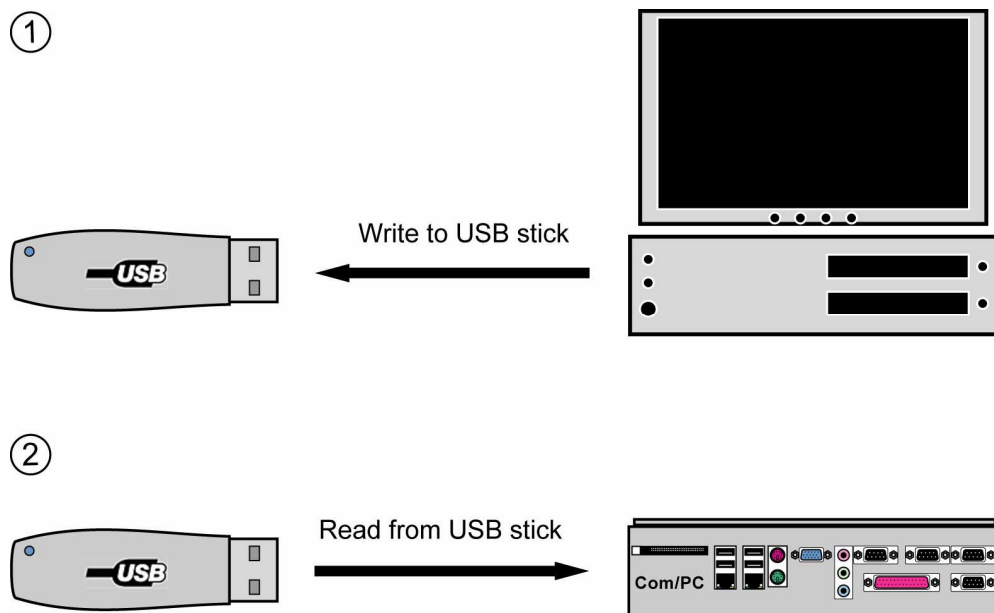


How to use the Com/PC WLAN (Wi-Fi) Interface in Client Mode

The Com/PC hardware contains an IEEE 802.11-based wireless interface. This WLAN (Wi-Fi) interface supports three different operating modes (**access point mode**, **client mode** and **ad-hoc mode**). The Com/PC Embedded Gateway Linux (EGL/2) operating system is also prepared for WLAN (Wi-Fi) usages.

- **1. Step:** Please download the current WLAN (Wi-Fi) driver archive for EGL/2 from the web site <http://www.ssv-comm.de> and extract the files from the archive to an USB stick.



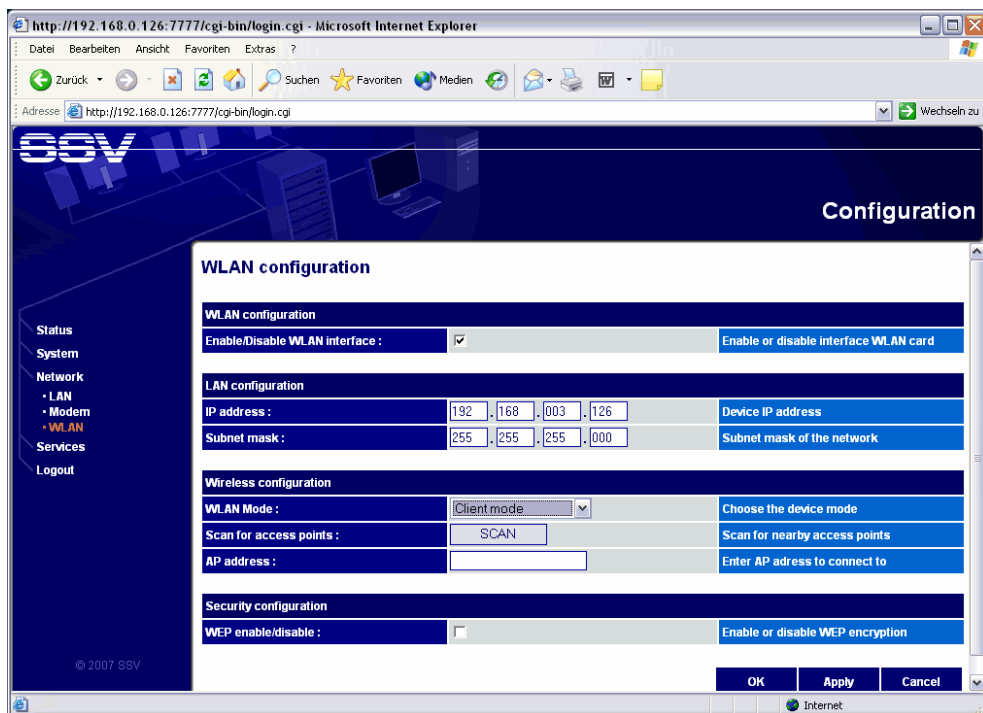
Please note: The installation of new EGL/2 software components needs two steps. The first step writes the necessary files to an USB stick with the help of a development system. The second step installs these files on the Com/PC.

- **2. Step:** Booting your Com/PC with VGA display and keyboard attached. Please see also the document: *Com/PC1 Embedded Gateway Linux 2 (EGL/2) First Steps*. Then insert the USB stick into the Com/PC.
- **3. Step:** Login as root user (user name *root*, password *root*). Then execute the *ssvusbmount* command.

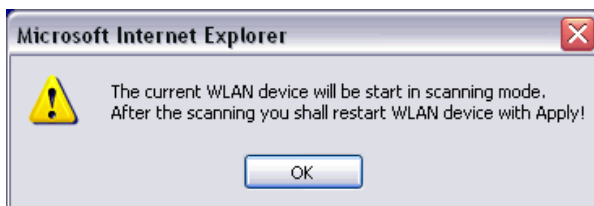
```
login as: root
Using keyboard-interactive authentication.
Password:
Last login: Wed Jan 31 12:00:01 2007 from 192.168.0.222
EGL2PRO:~# ssvusbmount
usb storage mounted at "/rw/usb".
Starting...
Update EGL/2 WLAN driver (Build 2830)...done.
Rebooting...
```

Please note: The EGL/2 command `ssvusbmount` mounts a USB stick to the Com/PC file system. This command is implemented over a shell script. `ssvusbmount` checks the USB device – direct after mounting – for a file with the name `usbautostart.sh`. If this file is present as shell script, then EGL/2 runs the script.

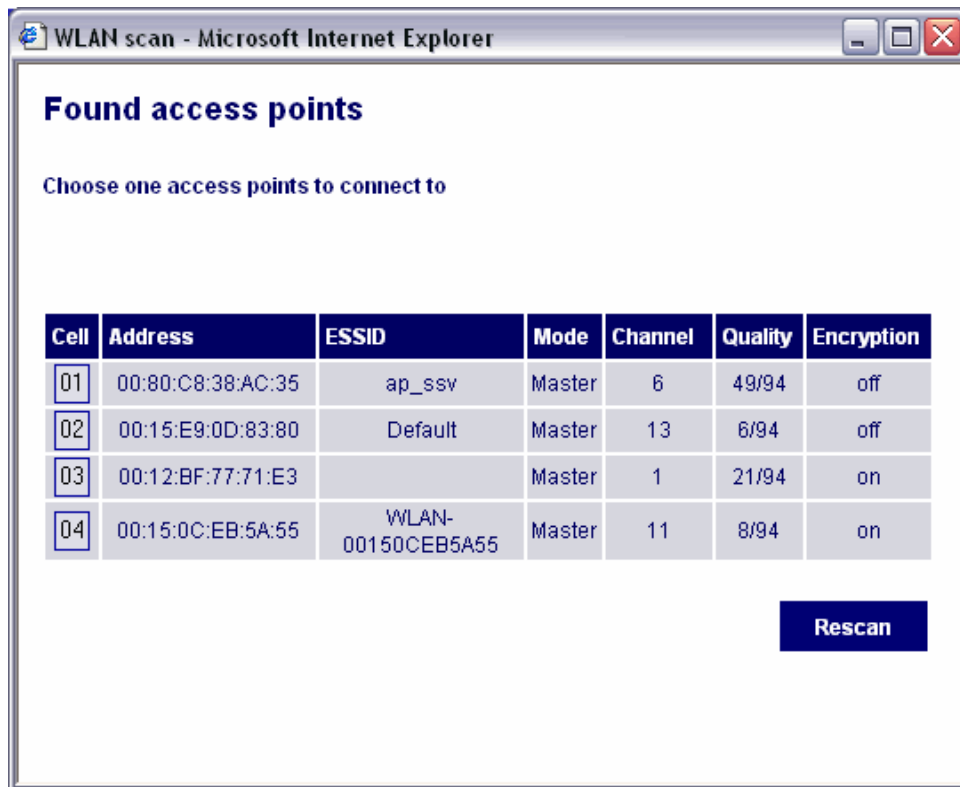
- **4. Step:** The `ssvusbmount` command installs the WLAN (Wi-Fi) driver and reboots the Com/PC. Please wait until the reboot has finished.
- **5. Step:** Use the Web-based configuration interface (see menu item *Network* → *WLAN*) to enable the WLAN (Wi-Fi) interface.
- **6. Step:** Select the WLAN *Client mode*. Supply the Com/PC WLAN (Wi-Fi) interface with a valid IP address and network mask. Then press the *SCAN* button (see menu item *Scan for access points*).



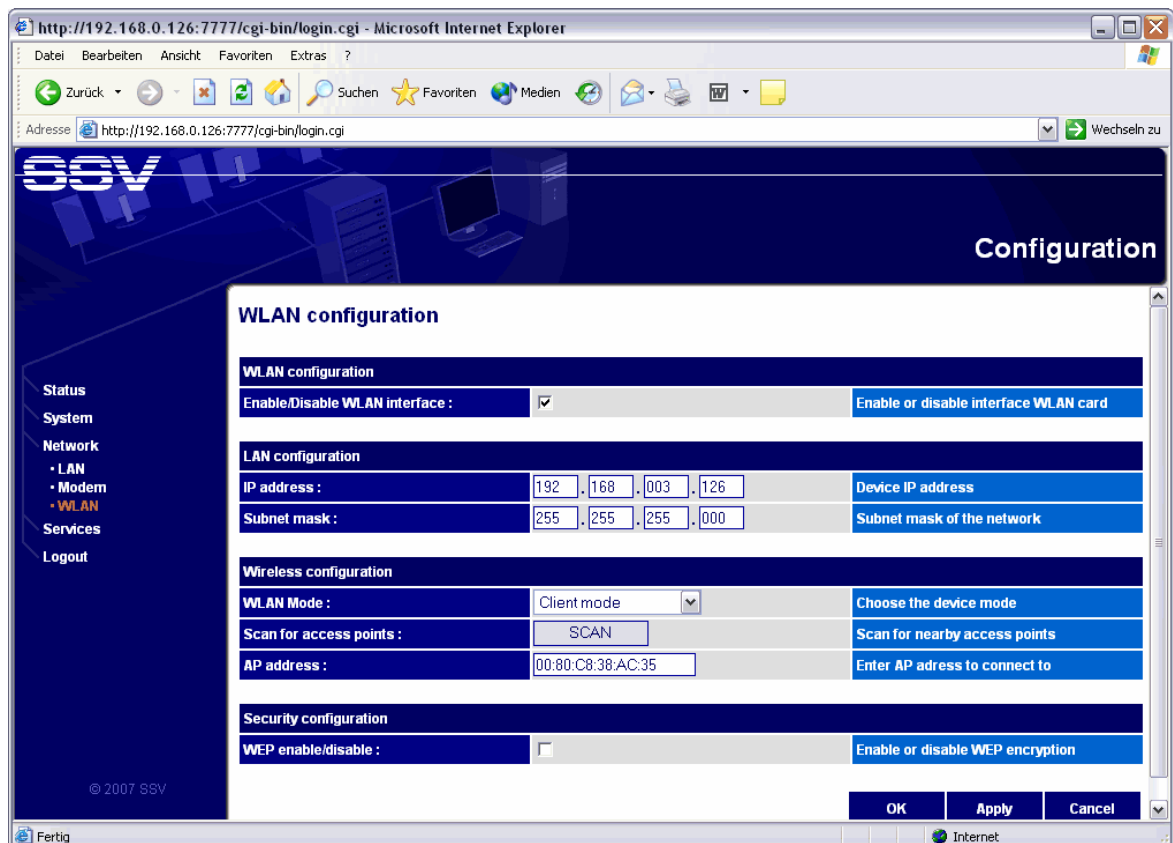
- **7. Step:** Before the Com/PC enters a scan mode (scan for access points) the software shows a message box. Please confirm this box with OK.



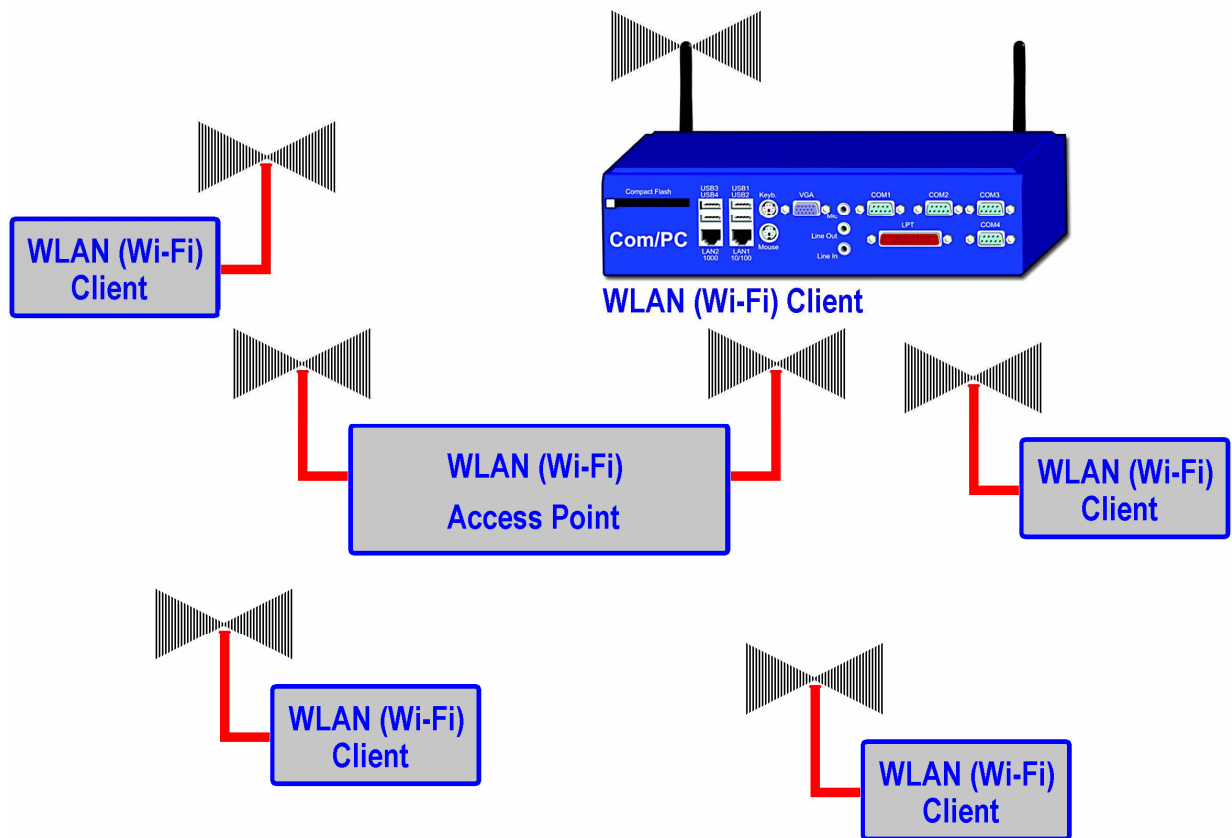
- **8. Step:** The Com/PC scans for useable access points. A new window shows all available access points near you. Press the *Cell* button within the left column to select a wireless network of your choice or close this window.



- **9. Step:** If an access point is selected, please press the *Apply* button. After that, the Com/PC is member of a wireless network.



Please note: The client mode allows you to connect the Com/PC over the WLAN (Wi-Fi) interface to an existing wireless network. The following picture shows the architecture.



The main system within this network is the access point in the centre of the picture. The Com/PC in client mode finds the access point over its SSID by an automated search.

All systems inside a wireless network of this kind need an IP address within the same range (e.g. 192.168.3.1 to 192.168.3.254 with network mask 255.255.255.0).

That is all.