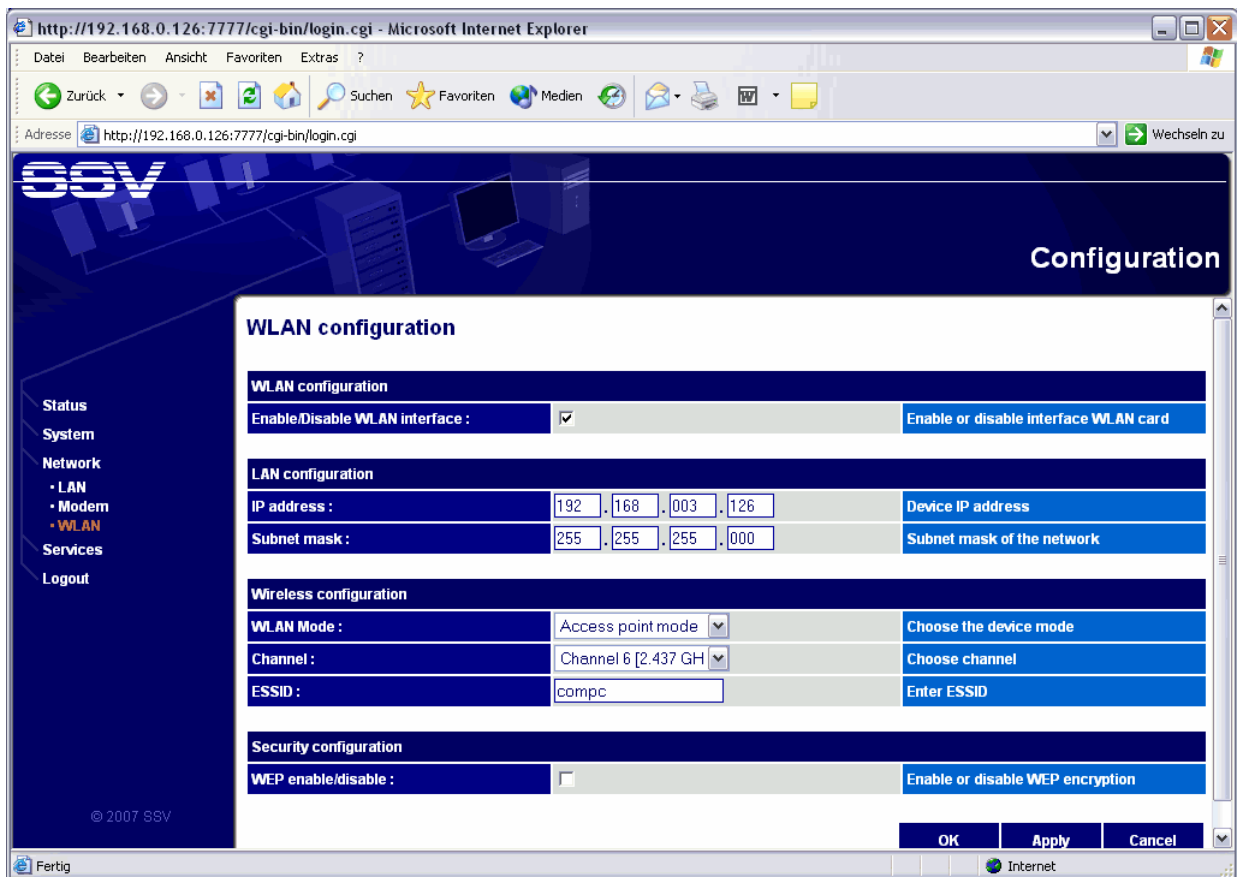


How to access the Apache Web server over WLAN (Wi-Fi)

The Com/PC Embedded Gateway Linux (EGL/2) operating system comes with a pre-installed Apache Web server. Please see also *mHT-CPC1L-07.pdf: How to use the Apache Web server* for more information. This server supports also CGI (Common Gateway Interface).

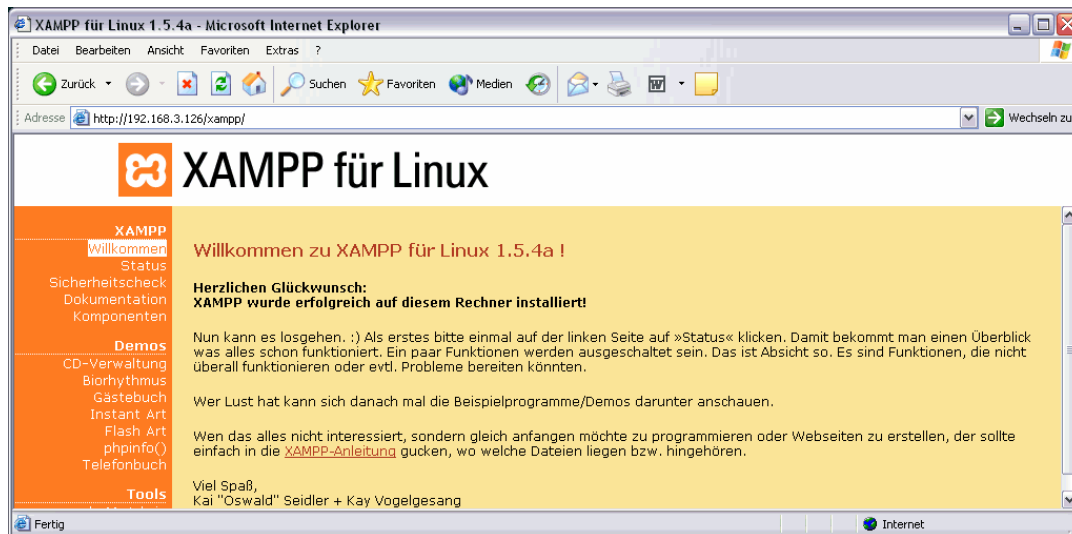
- **1. Step:** Make sure that the Com/PC WLAN (Wi-Fi) interface is enabled. Use the Web-based configuration interface (see menu item *Network* → *WLAN*) to enable this interface.



- **2. Step:** Select the WLAN *Access point mode*. The following table shows a useable EGL/2 default setup for the WLAN interface.

Parameter	Default Setup
WLAN Mode	Access Point
WLAN Channel	6 (2.437 GHz)
ESSID	compc
IP Address (Network Mask)	192.168.3.126 (255.255.255.0)

- **3. Step:** Access the Apache web server of your Com/PC over a WLAN (Wi-Fi) link. Use the URL ***http://192.168.3.126***. It is now also possible to access the Apache web server with PDAs (Personal Digital Assistant). Such kind of computer gadgets offers an embedded Wi-Fi interface and a web browser (e.g. Pocket Internet Explorer if the PDA is Windows CE-based).



Please note: PDAs offer a very small display size. Web pages, which are created for display sizes by 800 x 600 (SVGA) or better don't work well with small PDA LCDs. Please create HTML pages especially for PDAs if necessary.



The following HTML code works well with most Windows CE-based PDAs and the Microsoft Pocket Internet Explorer.

```
<html>
<head>
<title>
  PDA HTML Demo
</title>
```

```
</head>
<body>
<table border="1">
  <tr>
    <th align=left>Datum</th>
    <th align=left>Uhrzeit</th>
    <th align=left>Messwert</th>
  </tr>
  <tr>
    <td>17.01.2006</td>
    <td>12:00:00</td>
    <td>24,23</td>
  </tr>
  <tr>
    <td>18.01.2006</td>
    <td>12:01:23</td>
    <td>23,65</td>
  </tr>
  <tr>
    <td>19.01.2006</td>
    <td>12:00:45</td>
    <td>24,45</td>
  </tr>
  <tr>
    <td>20.01.2006</td>
    <td>12:02:12</td>
    <td>22,15</td>
  </tr>
  <tr>
    <td>21.01.2005</td>
    <td>12:00:05</td>
    <td>21,45</td>
  </tr>
  <tr>
    <td>22.01.2006</td>
    <td>12:01:41</td>
    <td>19,05</td>
  </tr>
</table>
</body>
</html>
```

That is all.