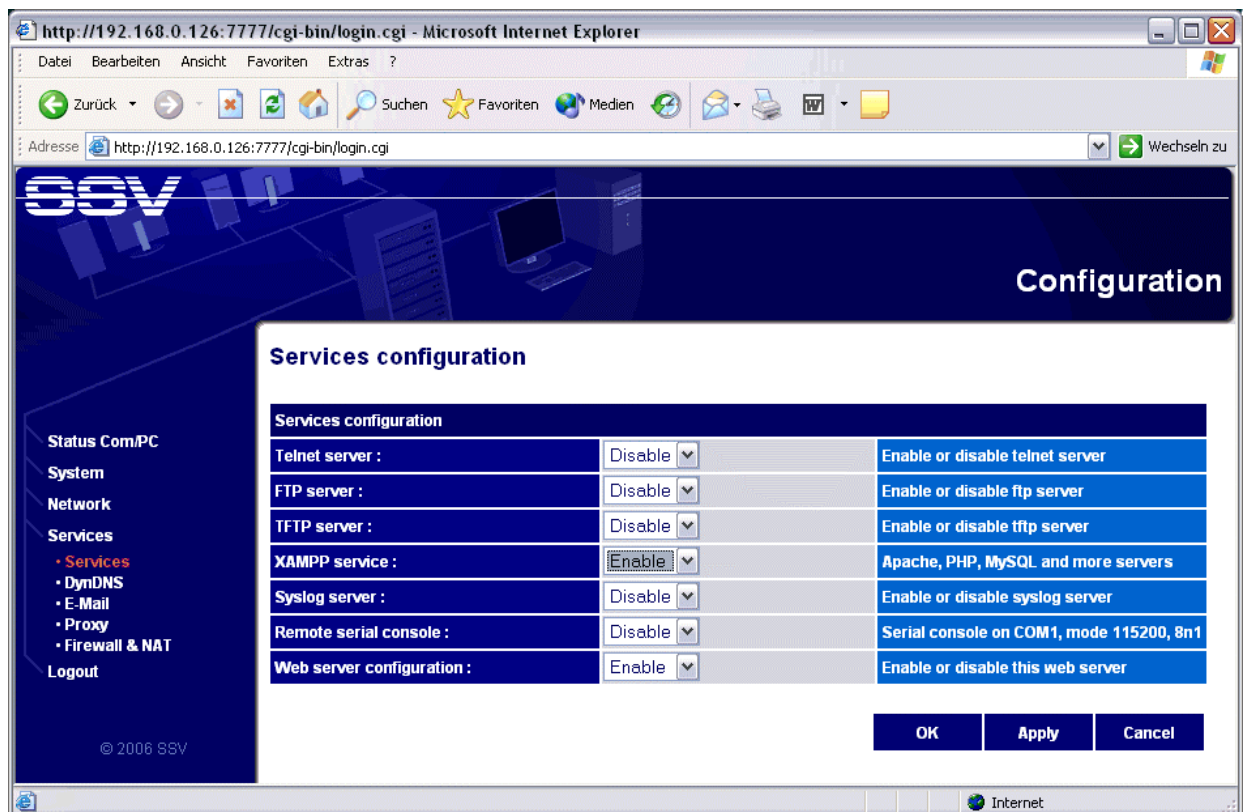


## How to use the Apache Web server

The Com/PC Embedded Gateway Linux (EGL/2) operating system comes with a preinstalled – but disabled – Apache server. Please use the EGL/2 Web-based configuration interface for enabling this server.

- **1. Step:** Run the EGL/2 Web-based configuration interface over LAN2. Select the main menu item *Services* and the sub item *Services (Services configuration)*. Then enable the *XAMPP service*. XAMPP stands for Apache, MySQL, PHP and Perl. This service runs the Apache Web server on your Com/PC.



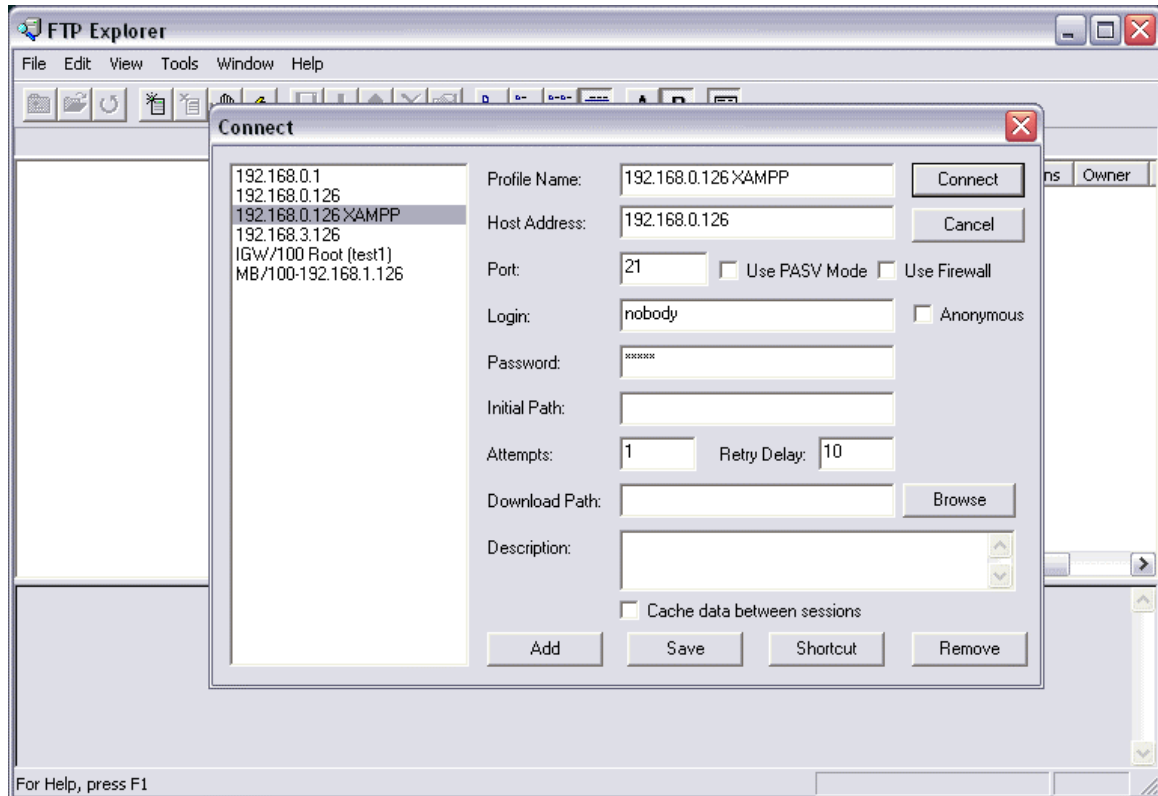
- **2. Step:** Press the *Apply* push button. After a short period of time the new services settings for the Com/PC is valid.
- **3. Step:** The object storage space (e.g. HTML pages, pictures, CGI programs, Java Applets ...) for the Apache Web server is located within the R/W (Read/Write) section of the Compact Flash card. The XAMPP service package contains with *ProFTP* also a FTP server. This server allows you to access the Apache object space.

Run a FTP client on your PC and setup a connection profile for the Com/PC FTP server. Please use the user name *nobody* and the password *lampp* for your Com/PC FTP profile.

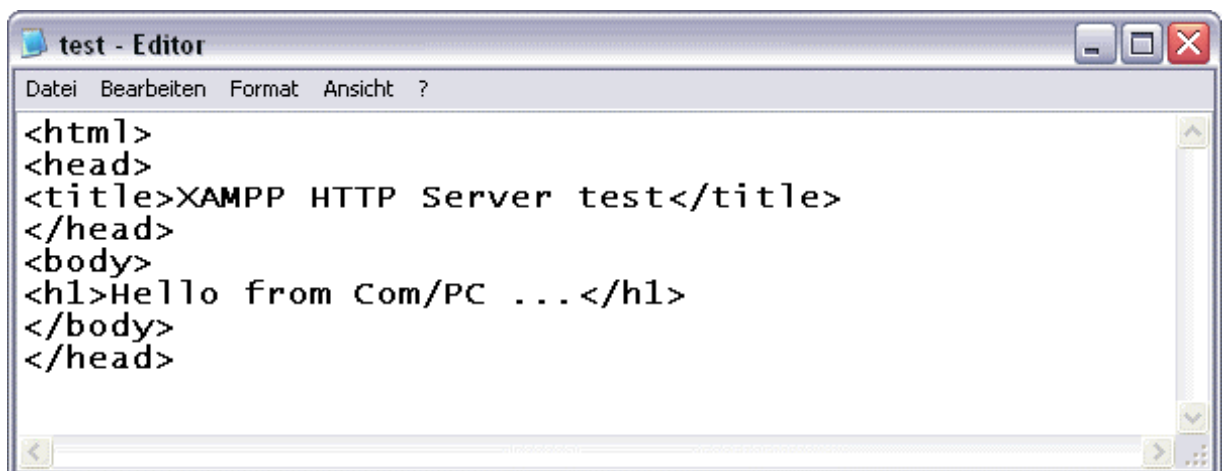
Linux PCs offers different FTP client programs. Please use the client of your choice for the FTP session.

Microsoft Windows-based PCs are not equipped with a useful FTP client. Please use the Internet and download a FTP client if necessary.

The Internet offers different FTP clients for Windows. The following pictures are based on the *FTP Explorer*. This tool is available over <http://www.ftpx.com/>.

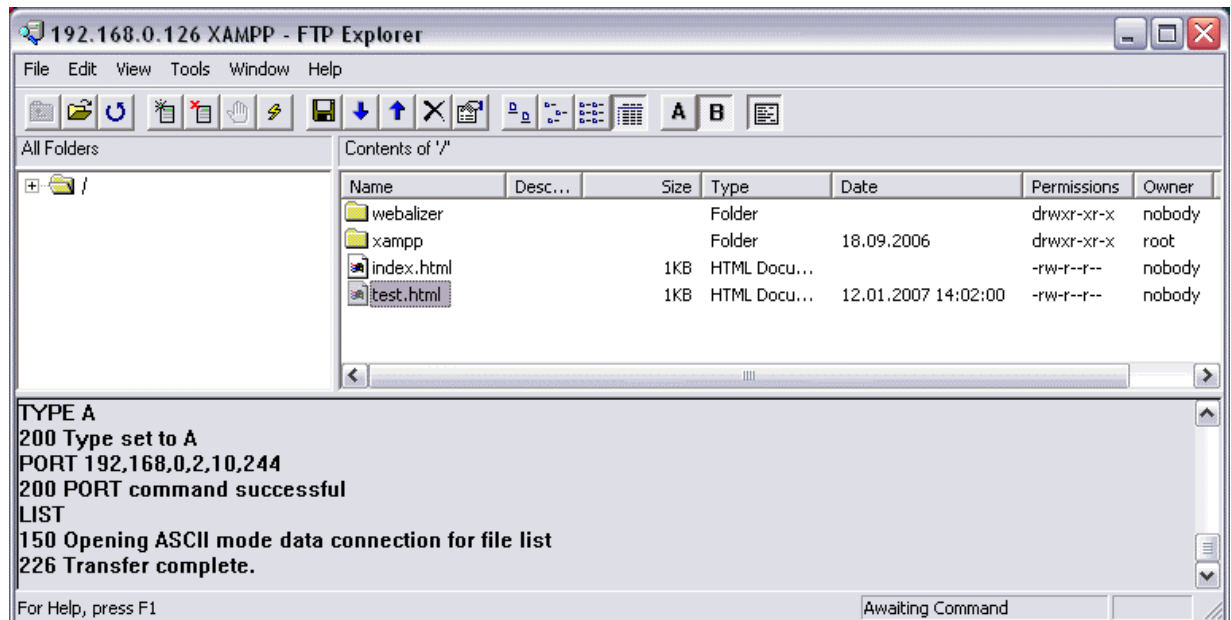


- **4. Step:** Create a HTML file on your PC system. Use a simple text editor for this step. Save the file with the name format *name.html* on your local PC hard disk drive. For this sample, please save the HTML file as *test.html*.



- **5. Step:** Now run a FTP session. Within this session you can upload files for the Apache Web server from your PC to the Com/PC Compact Flash card.

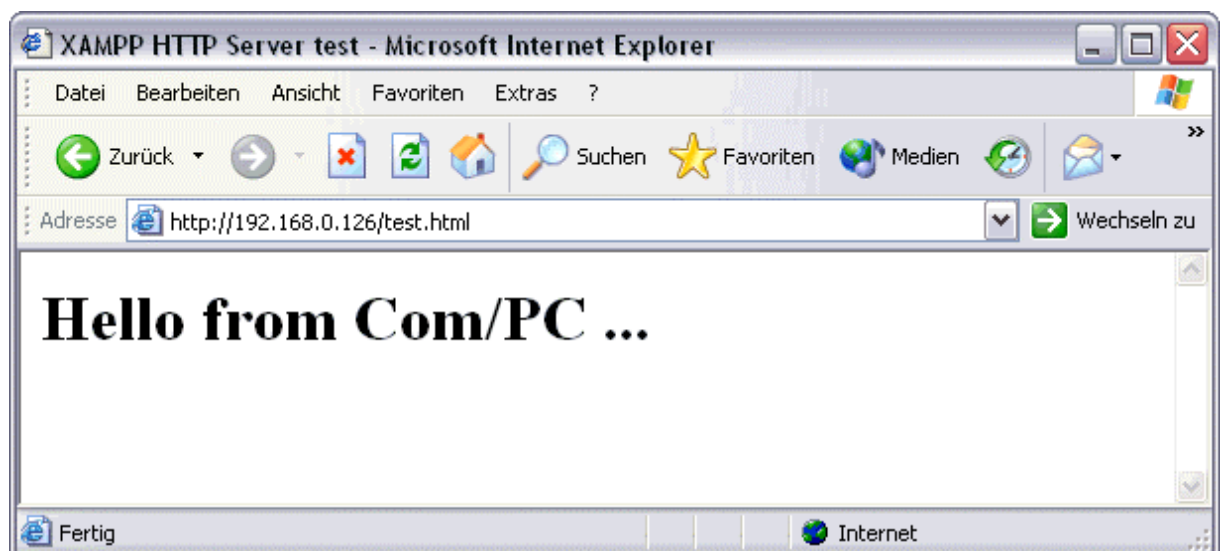
The Com/PC target directory for HTML files is `/rwnv/opt/lamp/htdocs` within the R/W (Read/Write) section of the Compact Flash card. This is the home directory for the XAMPP-internal FTP server.



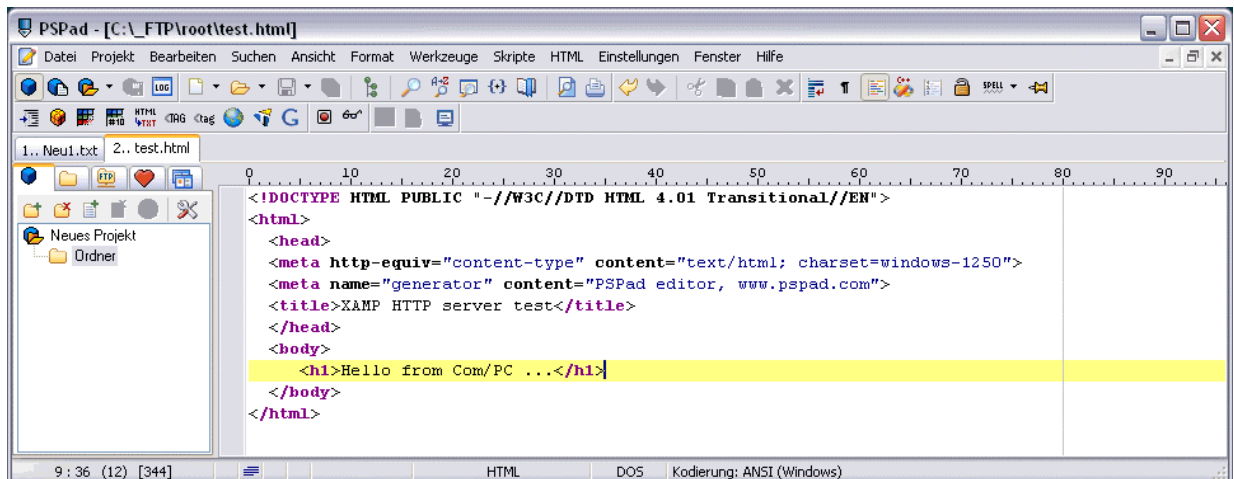
- **6. Step:** Run your PC Web browser and access the HTML file with your browser. Use the URL

**`http://192.168.0.126/test.html`**

This URL assumes that your Com/PC is using the IP address `192.168.0.126`. Change this address if necessary.

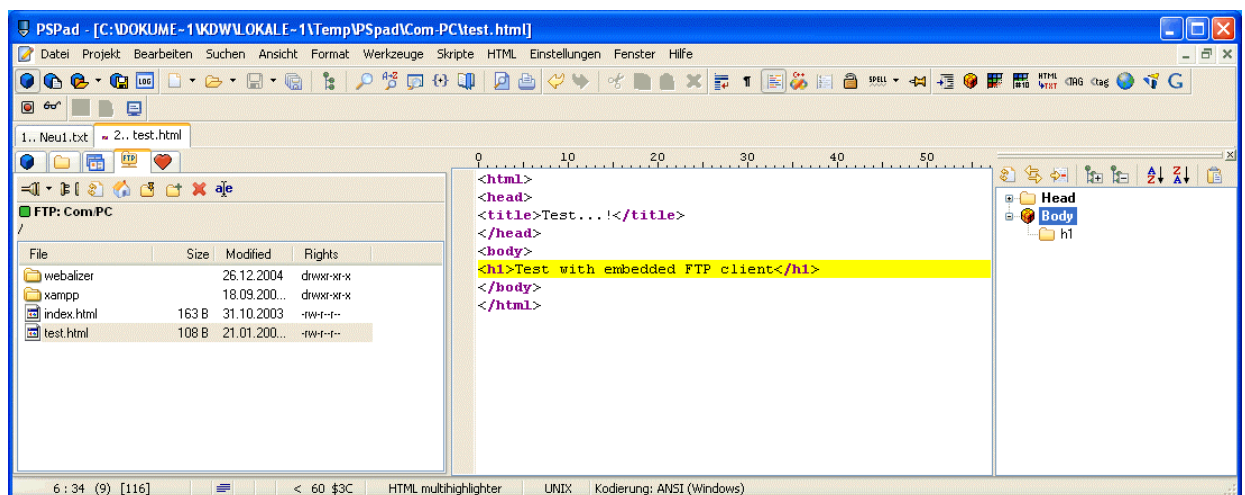


- **7. Step:** It is also possible to edit HTML files with special editors. The Internet offers some free tools. These tools are very helpful. The next pictures show *PSPad* as a sample.



*PSPad* is a powerful universal freeware editor and available over <http://www.pspad.com/>. *PSPad* runs on PCs with Windows operating systems.

- **8. Step:** *PSPad* offers also an embedded FTP client. This allows you to edit HTML files directly on the Com/PC.



**Please note:** The Com/PC Embedded Gateway Linux (EGL/2) contains also an FTP server (see *mHT-CPC1L-06.pdf: How to use a FTP session* for more details). The EGL/2 Web-based configuration interface allows you to enable and disable this server. Make sure that this FTP server is disabled, if the XAMPP service is enabled. Otherwise two FTP servers are enabled in the same time on your Com/PC.

That is all.