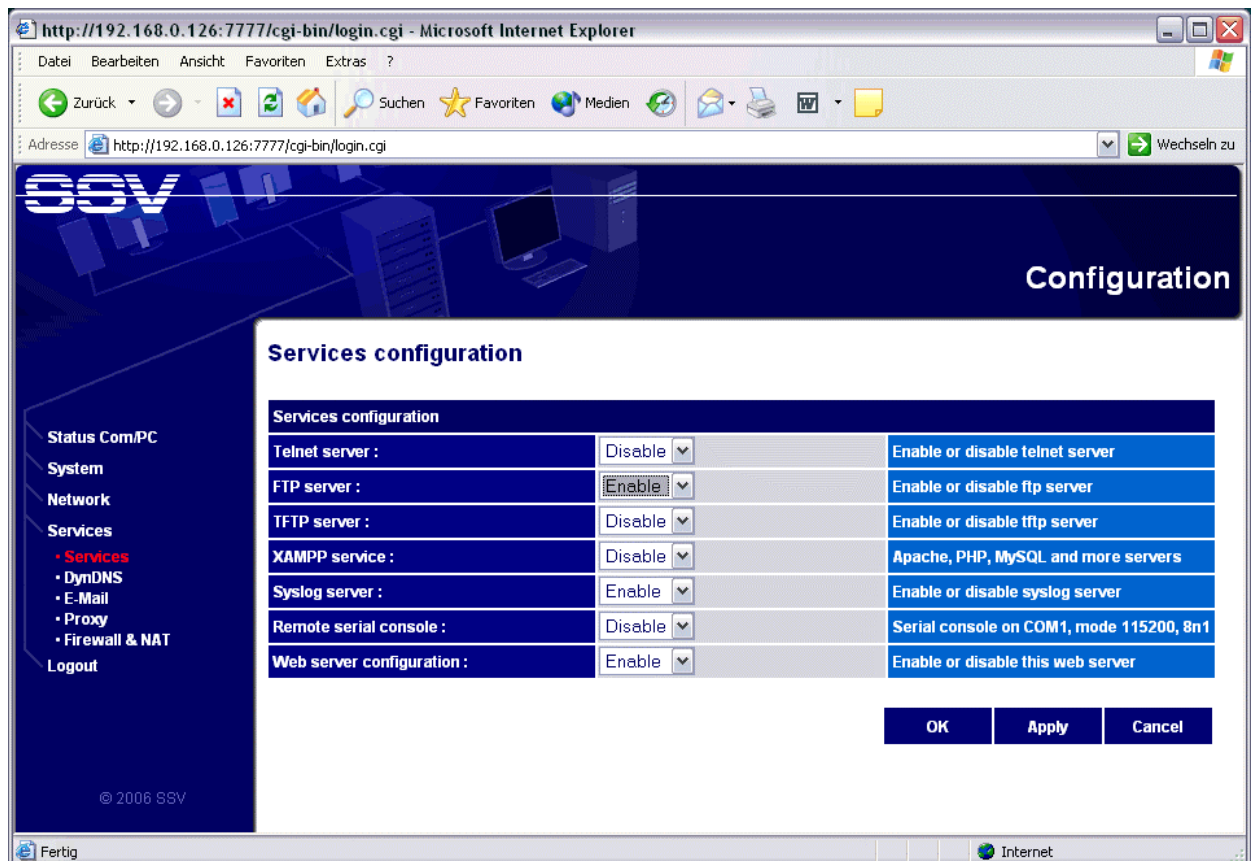


How to use a FTP session

The Com/PC Embedded Gateway Linux (EGL/2) operating system comes with a disabled FTP server. Please use the EGL/2 Web-based configuration interface for enabling this server.

- **1. Step:** Run the EGL/2 Web-based configuration interface over LAN2. Select the main menu item *Services* and the sub item *Services (Services configuration)*. Then enable the *FTP server service*.

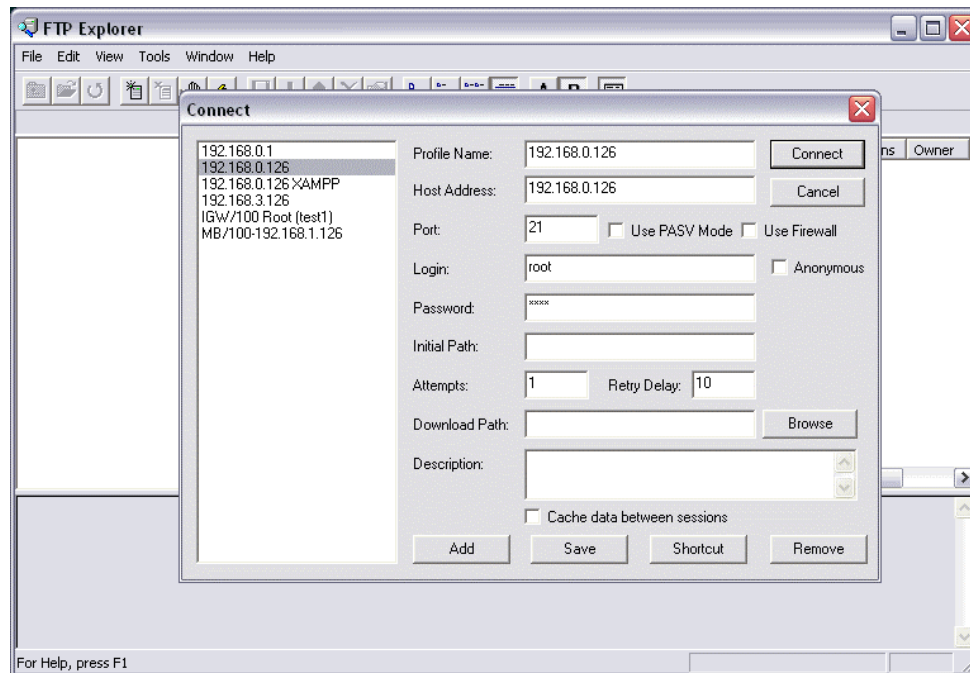


- **2. Step:** Press the *Apply* push button. After a short period of time the new services settings for the Com/PC is valid.
- **3. Step:** Run a FTP client on your PC and setup a connection profile for the Com/PC FTP server. Please use the user name *root* and the password *root* for your Com/PC FTP profile.

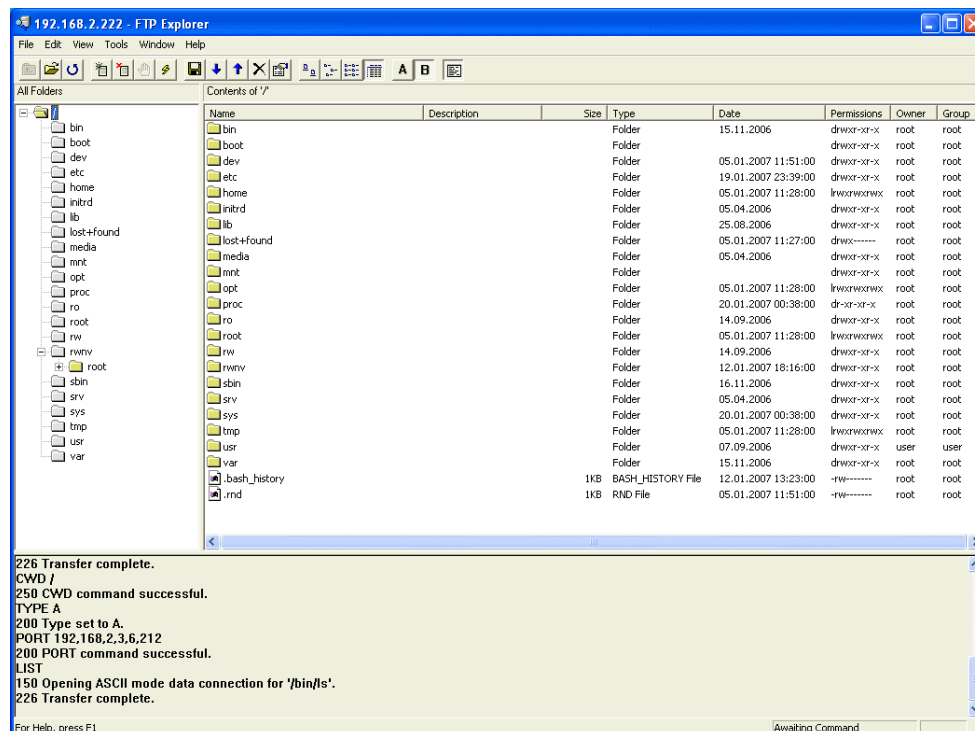
Linux PCs offer different FTP client programs. Please use the client of your choice for the FTP session.

Microsoft Windows-based PCs are not equipped with a useful FTP client. Please use the Internet and download a FTP client if necessary.

The Internet offers different FTP clients for Windows. The following pictures are based on the *FTP Explorer*. This tool is available over <http://www.ftpx.com/>.



- **4. Step:** Now run a FTP session. Within this session you can download and upload files between your PC and the Com/PC.



Please note: The EGL/2 XAMPP services contains also a FTP server. Please don't enable the EGL/2 FTP server if the XAMPP services are enabled.

That is all.