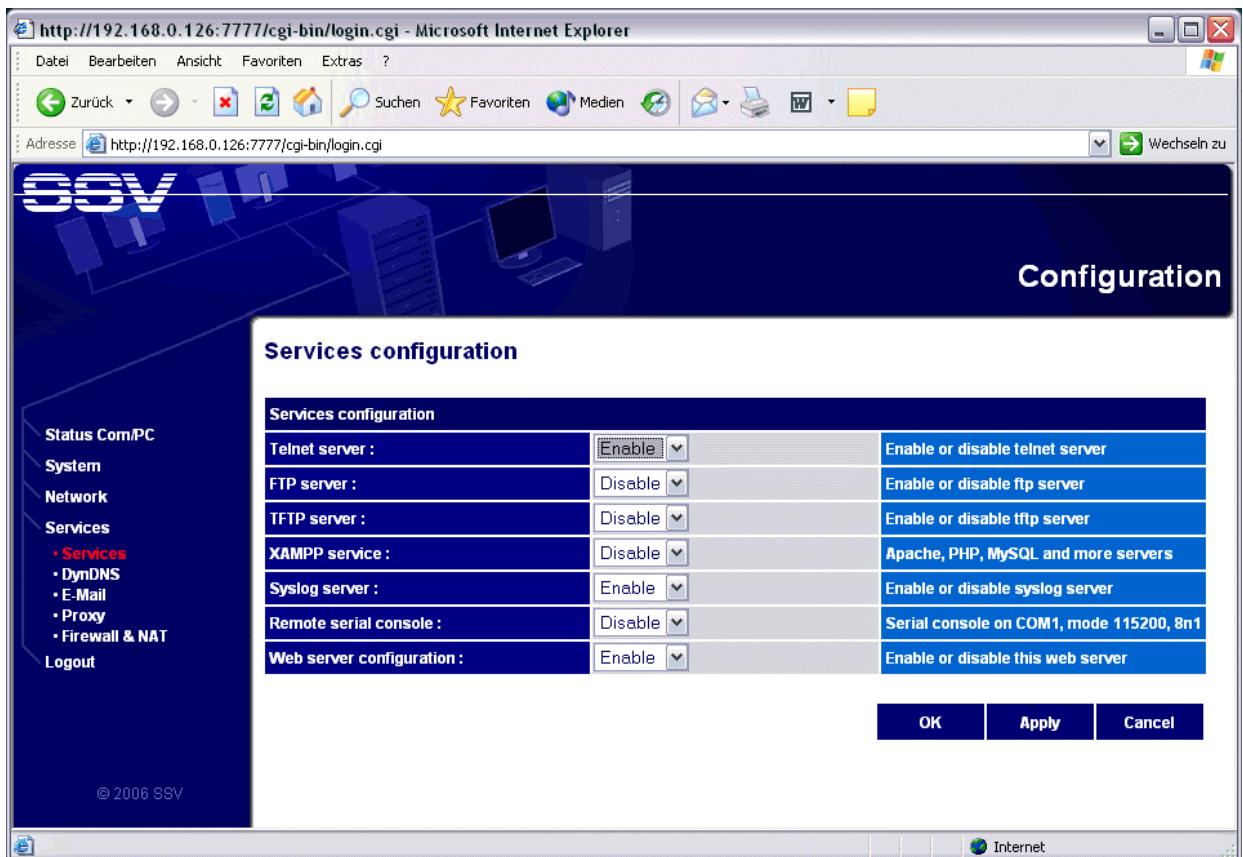


## How to use a Telnet session

The Com/PC Embedded Gateway Linux (EGL/2) operating system comes with a disabled Telnet server. Please use the EGL/2 Web-based configuration interface for enabling this server.

- **1. Step:** Run the EGL/2 Web-based configuration interface over LAN2. Select the main menu item *Services* and the sub item *Services (Services configuration)*. Then enable the *Telnet server service*.



- **2. Step:** Press the *Apply* push button. After a short period of time the new services settings for the Com/PC is valid.
- **3. Step:** Run a Telnet client on your PC and setup a connection to the Com/PC Telnet server (e. g. use a command line with the name *telnet* and the IP address of the Com/PC).

```
telnet 192.168.0.126
```

In this sample command line is *192.168.0.126* the IP address of your Com/PC. Replace this address with a valid address for your environment.

**Please note:** Make sure, that no firewall between your PC and the Com/PCs blocks the Telnet access.

- **4. Step:** Please use the user name *root* and the password *root* for your Com/PC Telnet login.

```
Telnet 192.168.0.126
Embedded Gateway Linux 2 Professional - Version 1.00-20061208
EGL2PRO login: root
Password:
Last login: Fri Jan 12 15:50:30 2007 from 192.168.0.2 on pts/0
Linux EGL2PRO 2.6.16.20 #1 PREEMPT Thu Sep 7 13:28:47 CEST 2006 i686 GNU/Linux
EGL2PRO:~# ps -A
  PID  TTY          TIME CMD
    1  ?           00:00:00 init
    2  ?           00:00:00 ksoftirqd/0
    3  ?           00:00:00 events/0
    4  ?           00:00:00 khelper
    5  ?           00:00:00 kthread
    7  ?           00:00:00 kblockd/0
    8  ?           00:00:00 kacpid
   118  ?           00:00:00 pdflush
   119  ?           00:00:00 pdflush
   121  ?           00:00:00 aio/0
   704  ?           00:00:00 kseriod
   120  ?           00:00:00 kswapd0
   769  ?           00:00:00 kpsmoused
   777  ?           00:00:00 kjournald
  1064  ?           00:00:00 khubd
  1272  ?           00:00:00 kjournald
  1574  ?           00:00:00 sshd
  1579  ?           00:00:00 thttpd
  1582  ?           00:00:00 cron
  1712  tty1        00:00:00 getty
  1713  tty2        00:00:00 getty
  1714  tty3        00:00:00 getty
  1715  tty4        00:00:00 getty
  1716  tty5        00:00:00 getty
  1717  tty6        00:00:00 getty
  1813  ?           00:00:00 access
  2069  ?           00:00:00 inetd
  2078  ?           00:00:00 in.telnetd
  2079  pts/0      00:00:00 bash
  2083  pts/0      00:00:00 ps
EGL2PRO:~#
```

That is all.