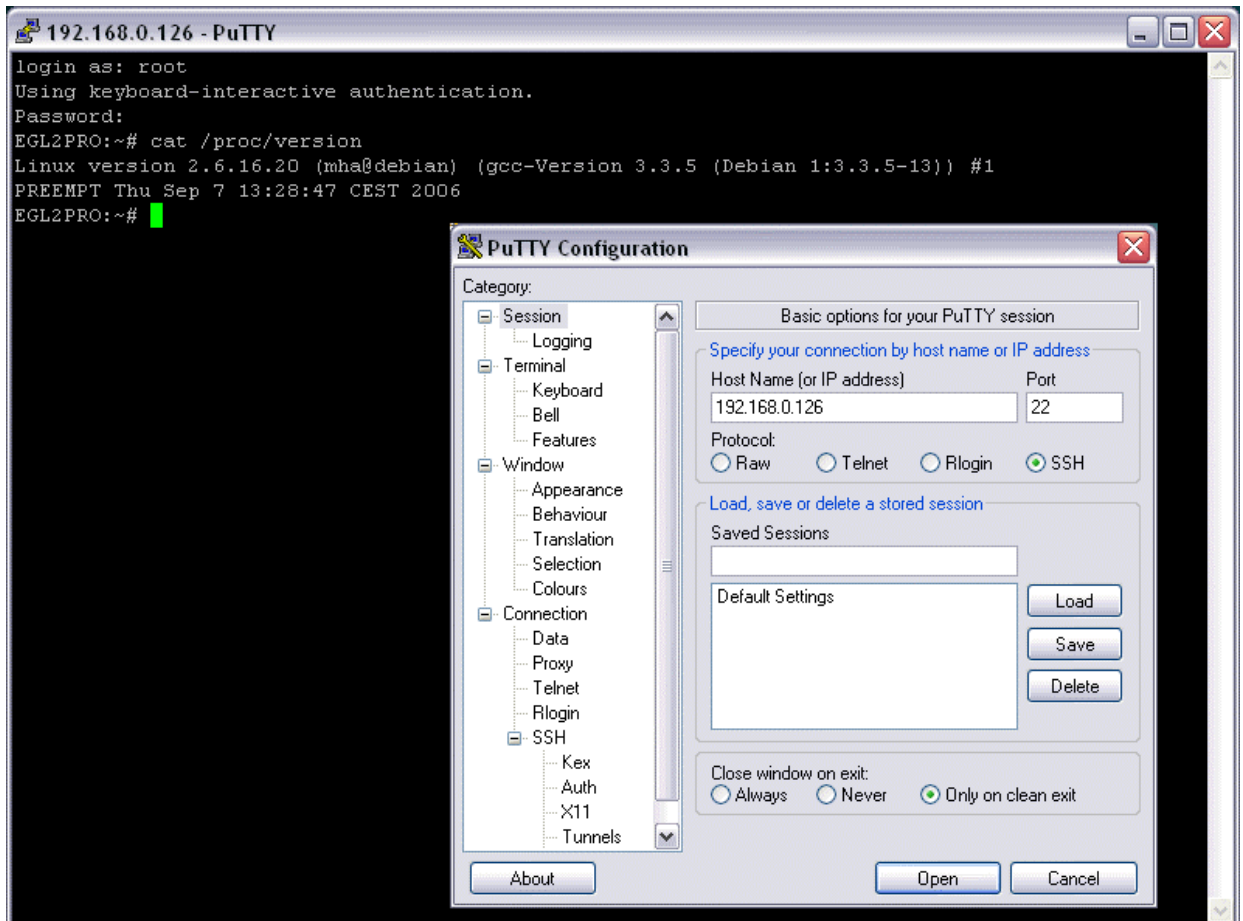


How to use a SSH session

The Com/PC Embedded Gateway Linux (EGL/2) operating system comes with a preinstalled SSH server.

- **1. Step:** Run a SSH client on your desktop PC. The free SSH client *PuTTY* is very useable for SSH sessions. Use the user name *root* and the password *root* for your login.



Please note: The EGL/2 default configuration comes with a disabled Telnet server. Please use the EGL/2 Web-based configuration interface for enabling this server.

That is all.