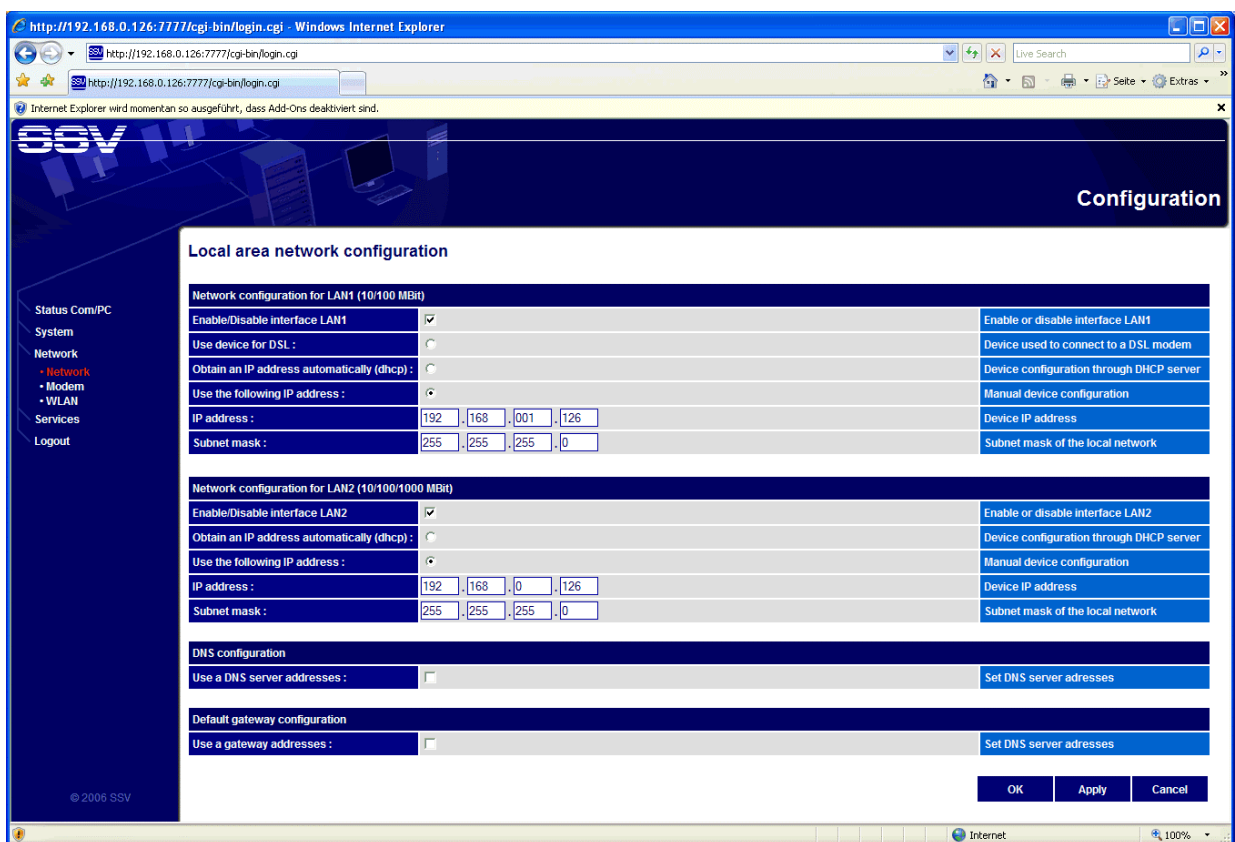


## How to enable the eth0 (LAN1) Ethernet LAN interface

The default configuration of the Com/PC Embedded Gateway Linux (EGL/2) operating system comes with eth1 (LAN2) enabled and eth0 (LAN1) disabled.

- **1. Step:** Run the EGL/2 Web-based configuration interface over LAN2. Select main menu item *Network* and sub item *Network (Local area network configuration)*. Turn on the enable radio button for LAN1 (item *Enable/Disable interface LAN1*). Then assign LAN1 to a valid static IP address for your Ethernet network environment or enable DHCP.
- **2. Step:** Press the *Apply* push button. After a short period of time the new LAN setup for the Com/PC is valid.



That is all.