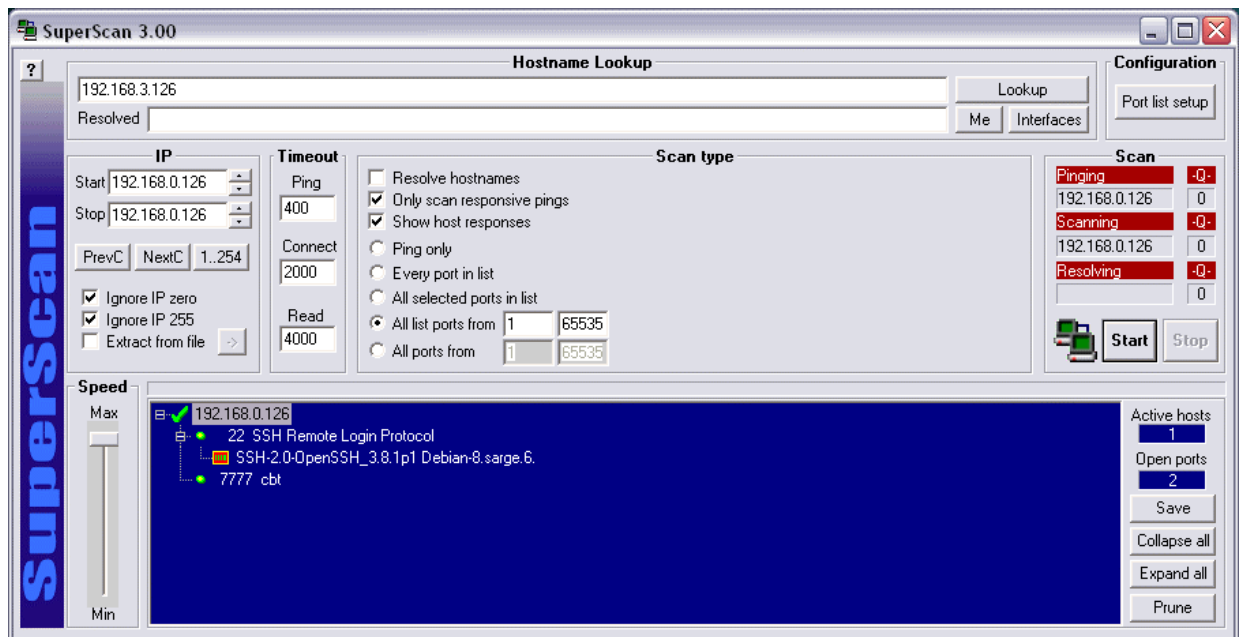


How to find the open TCP ports

The TCP/IP default configuration of the Com/PC Embedded Gateway Linux (EGL/2) operating system comes with two open TCP ports (**TCP/22**: SSH, **TCP/7777**: HTTP server for EGL/2 Web-based user interface).

- **1. Step:** Run a port scanner program (*SuperScan* or similar) on your PC and find the open TCP ports of a Com/PC EGL/2 operating system.



That is all.